

2018
KEEP INNOVATING
PRODUCT CATALOGUE

NITECORE®
www.nitecore.com

NITECORE®

SYSMAX CORP.

SYSMAX Innovations Co., Ltd.
Rm 2601-06, Central Tower, No.5 Xiancun Road, Tianhe District,
Guangzhou, 510623, Guangdong, China
Tel: +86 20 83862000 Fax: +86 20 83882723
E-mail: info@nitecore.com

NITECORE®
— UPDATED IN JUL. 2018 —



CONTENTS

Scenarios	2
About NITECORE	4
Patent	6
Awards	8
Knowledge	10
Lighting	18
— Tiny Monster Series	20
— Precise Series	24
— Smart Ring Tactical Series	28
— Chameleon Series	32
— Rechargeable Series	36
— Multitask Hybrid Series	38
— Multi-Task Series	42
— Explorer Series	46
— T Series	50
— NU Series	54
— Headlamp Series	58
— Lantern Series	62
— Explosion-Proof Series	66
— Diving Light Series	70
— Bike Light Series	71
— Concept Series	72
— GEM Series	74
— Hunting Kits	75
Charger	76
Accessory	86
Specifications	94

KEEP INNOVATING

PHOTO CREDITS

Tactical Two
Lee McGrath
José Miguel Martínez
Alexander Morris
Sirio Sechi
Darren White
Kristian Bjerre
Kirk Meyer

NITECORE®

WHEN THERE IS DARKNESS THERE IS A NITECORE LIGHT

NITECORE LED lights have become standard equipments for military and law enforcement in various countries, whilst being favored by outdoor enthusiasts, which are ideal for outdoor adventures, law enforcement, trail running, industrial lighting and more.



Hiking/Trekking

Generally, lights for hiking not only require high output but also light weight, long duration and reliability. For team leaders, high output and far-reaching spotlights help to see the path ahead, and a red caution light helps team members to find you.

Recommended models :
NU10, NU30, HA20, HA40



Running

For long distance running, runners may prefer a lightweight headlamp with flood light and long runtime. High output and red caution light are required when necessary. For those who enjoy leisurely urban night running, a portable and high performance headlamp ensures their safety in running.

Recommended models :
NU05, NU20, NU25, NU30



Camping

For camping, a lightweight and portable lantern with a loop or magnetic base may be the most convenient to set hands free. Besides high output, it also requires soft beam with high colour rendering index, long duration and more.

Recommended models :
LA10/LA10 CRI, LR10/LR10 PANDA, LA30, LR30



Climbing

Considering the harsh environment on high altitude, a headlamp with high intensity, long runtime and grand throw is essential. For freezing environments, low temperature resistance is required to maintain stable performance of lights. Hands-free and lightweight products are more popular.

Recommended models :
HC30, HC33, HA40, HC60, HC65, HC70



Caving

Due to the dangerous and low-light environment in cave, high output lights are required for caving. Since there is water in cave and the temperature is low, low temperature resistance and waterproofness are necessary. Ruggedness are also paramount.

Recommended models :
HC30, HC33, HC65, HC70, EF1, EH1



Search & Rescue

For search and rescue, a lighting tool should preferably have blinding lumens, superb beam distance as well as long runtime. Qualities like portability, ruggedness and light weight are also a plus.

Recommended models :
TM28, TM38, MH23, TM26GT, EA81, R40, EC4SW, HC33, HC70



Tactical

As a simple and intuitive UI is most important in tactical lights, Strobe Ready™ definitely meets the need. Besides, it requires high output and tactical defense function. Using with bezel, tactical ring, gun mount and remote switch to enhance the tactical function overall.

Recommended models :
SRT7GT, SRT9, P20UV, P20, CI6, MT1U, P10GT, P05, MH12GT



Industrial workplace

Rechargeable lights are usually welcomed by industrial workers due to better cost performance. Hands-free capability, portability, an intuitive user interface are required to ensure convenience. For hazardous industries like mining or oil extraction, explosion-proof lights are mandatory.

Recommended models :
EF1, EH1, EHTS, HC30, TM26GT, TM38



Fishing

Hands-free capability is paramount. Colored outputs are inconspicuous, especially blue light. Blue light will not alarm underwater wildlife, and is able to attract some fishes, activate fluorescence of the float, which is why it is well received by fisherman or fishing enthusiasts.

Recommended models :
SRT7GT, SRT9, CB6



Law Enforcement

For law enforcement applications, the lighting tools should have high output, long runtime and direct access to strobe. This kind of lighting tool should be highly reliable in resisting dust, water and shocks, and should be tough enough to confront contingencies.

Recommended models :
MH27, TM03, P20UV, MH20GT, R25, R40, SRT7GT



EDC

EDC (everyday carry) is designed to be carried with you everyday, thus it must be ultra-compact, lightweight, and always works when you need it. It does not require multiple choices of brightness level, whilst sufficient runtime and easy operation are necessary.

Recommended models :
TINI, TIP2017/TIP SS, P05/P05PINK, P10GT, P12GT, MT2A, EC11, EC20, SRT3, Concept 1



Diving

A flashlight for diving needs to be totally waterproof and reliable, with high output, sufficient duration and flexibility. It is better to have a lanyard in case of loss. Red output is a plus for it serves as a supplementary lighting underwater.

Recommended models :
DL10



Hunting

A hunting light should have high output with optimal beam distance to ensure long range visibility. Light weight, compatibility with shotguns, ability to absorb recoil are also required. Colored outputs are preferred to preserve users' night adapted vision, or to not startle the preys.

Recommended models :
P30, MH25GT, P16 TAC, CR6, CG6, MH40GT, MT40GT, MT42



Cycling

Lighting with capability to illuminate blind spot ahead or under foot is essential to ensure safety in cycling. Features like multiple modes for different riding conditions, easy to operate, install or remove, flexible charging options, compatibility with handlebars of various sizes also add up to a great bike light. A rear caution light is also necessary for maximum attention and safety.

Recommended models :
BR35, NU05, BM02, P12GT



Photography

Full area coverage uniform lighting with color rendering capability is best for photography. Multiple output choices allowing for adjusting lighting according to ambient environment are also required. Portability, compatibility with tripods and colored outputs are a plus.

Recommended models :
GP3, LR30, EC4SW, TM28

ABOUT NITECORE

Since its inception in 2007, NITECORE has long been on top of the hierarchy in the LED lighting and battery charger markets backed by the tremendous innovation competences it masters. NITECORE's products are some of the most sought after in America, Europe, Middle East and Oceania totaling over 100 countries.

NITECORE has a R&D team commanding excellent critical thinking competency and ideas generation, which forms the backbone of the company that harvested various invention patents, iF Design Award, Red Dot Design Award, Good Design Award and ISPO Award.

Operating in full compliance with ISO9001, NITECORE's factories have set the most exacting production and testing standards to ensure quality and performance. All products are certified by CE, RoHS, FCC, CEC, REACH, KC or C-TICK. All batteries and chargers are globally insured by Ping An Insurance Group.

2004

LR7 - One of the first high-intensity LED flashlights made in China

2005

Luxeon - The first branded Chinese 3W LED flashlight.

2006

One of the first flashlights that adopts a HA-III finish.

2007

MK2 - The first AA-based flashlight that features an integrated MCU.

2008

NDI - The world's first AA-based flashlight that features Infinitely Variable Brightness.

2009

D10 - The world's first flashlight that features Smart PD (Piston Drive) System.

2010

IFE1 - The first flashlight that features Magnetic Sensor IBS System.

2011

TM11 - The world's smallest and lightest 2000-lumen flashlight.

2012

EA4 - 4xAA Compact Searchlight

2013

SRT7 - The world's first line of flashlights that features third generation SSR (smart selector ring) technology

2014

CR6 - The only one flashlight available with white light and powerful 3000mW red LEDs

2015

EC4S - ISPO Award WINNER of 2015/2016

2016

red dot award 2016 winner
MH27 - The first USB rechargeable, tri-colored tactical flashlight to win Red Dot Award: Product Design

2017

GOOD DESIGN AWARD
ISPO AWARD
LA10/LA10 CRI - The world's first magnetic lipstick-shaped mini lantern wins iF DESIGN AWARD, GOOD DESIGN AWARD and ISPO Award

2018

Concept 2 GEM8UV

PATENT

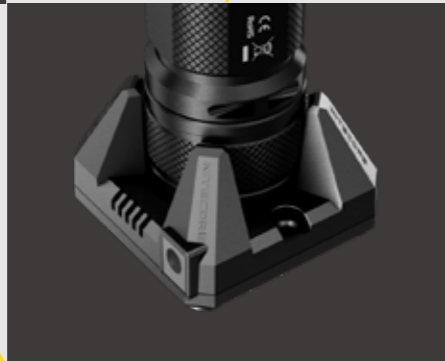
With advanced technologies and technical personnel, NITECORE has been keeping innovating for over the years and has harvested over one hundred invention patents and utility model patents.



THE INDUSTRY'S FIRST FLASHLIGHT UTILIZING INDUCTIVE CHARGING TECHNOLOGY



INNOVATIVE STROBE READY™ SYSTEM



INNOVATIVE ACTIVE DIMING TECHNOLOGY (ADT)

INNOVATIVE MULTIMETER FUNCTIONALITY



INNOVATIVE INTEGRATED DUAL PICATINNY RAIL CONNECTORS



INNOVATIVE MULTI-OUTPUT FLASHLIGHT SERIES



THE FIRST HEADLAMP FEATURING A MAGNETIC SLIDING SWITCH AND INFINITELY VARIABLE BRIGHTNESS



INNOVATIVE UNIQUE INTEGRATED TECHNOLOGY (UIT)



INNOVATIVE TWO STAGE SWITCH

INNOVATIVE FIXABLE/360° ROTATABLE FLASHLIGHT HOLSTER



ALL-IN-ONE HIGHLY COMPATIBLE AND INTELLIGENT CHARGER SERIES



INNOVATIVE 360° ROTATABLE SPHERIC AXIS DESIGN



PATENT

PRODUCT AWARDS

Established in 2007, NITECORE has long been at the forefront of technological advancement in portable illumination. Through its tremendous research and development capacity, the brand has harvested numerous global awards including the industrial design "Oscar" iF Design Award, Red Dot Design Award, Good Design Award and ISPO Award. NITECORE products are internationally recognised in over 100 countries.

LA10 CRI
85 Lumens






F2
Flexbank




I8
8-slot
Intellicharger




Concept 1
1800 Lumens







NU05
35 Lumens
Headlamp Mate




R25
800 Lumens




MH27
1000 Lumens

EC4S
2150 Lumens




CR6
440 Lumens




www.everydaycarry.com
Most Innovative Flashlight
Award



TINI 2018

China outdoor gears:
Best in Class



BR35 2018

www.vapinginsider.com
Best Vape Battery Charger



SC2 2017

www.vapinginsider.com
Best Vape Battery Charger



I8 2017

www.everydaycarry.com
Everyday Carry Reader's
Choice/Staff Picks



**MH27UV/TIP2017CRI/
SRT9/LA10/LA10CRI** 2017

Winner of Small Backpacks
of TACTICAL GEAR Magazin



BP20 2017

www.vergleich.org
BEST Flashlight of 2017




TIP/MTIU 2017

www.vapinginsider.com
Best Vape Battery Charger




D4 2016

www.vaping360.com
Best Two Bay Charger for
Vaping




SC2 2016

www.everydaycarry.com
The Best Flashlight for EDC



TUBE 2015

www.nightphotographyworkshop.com
The Best Headlamp for
Night Photography



HC30 2015

Xingshi Cup industrial design:
Best Appearance Design



TM26 2014

China outdoor gears:
Top Pick/Best in class



**SRT7/LR30/MH27/
EA41/HC50**

Bushcraft and survival
skills magazine:
Best in Test



SRT7 2013

WHAT IS AN LED ? >>>>

LED is an acronym for Light Emitting Diode – a special type of semiconductor that was initially used to replace standard lamps in early electronic equipment, later progressing to consumer electronics in the form of VCR and calculator displays. With the advance of technology, LED can be used as a light source with a general life expectancy of 50,000 hours or even 100,000 hours. In addition, LED features the advantages of energy saving and environmental protection, small size and long lifespan, and can be applied in harsh environments.

LEDs' advantages:

Energy Conservative

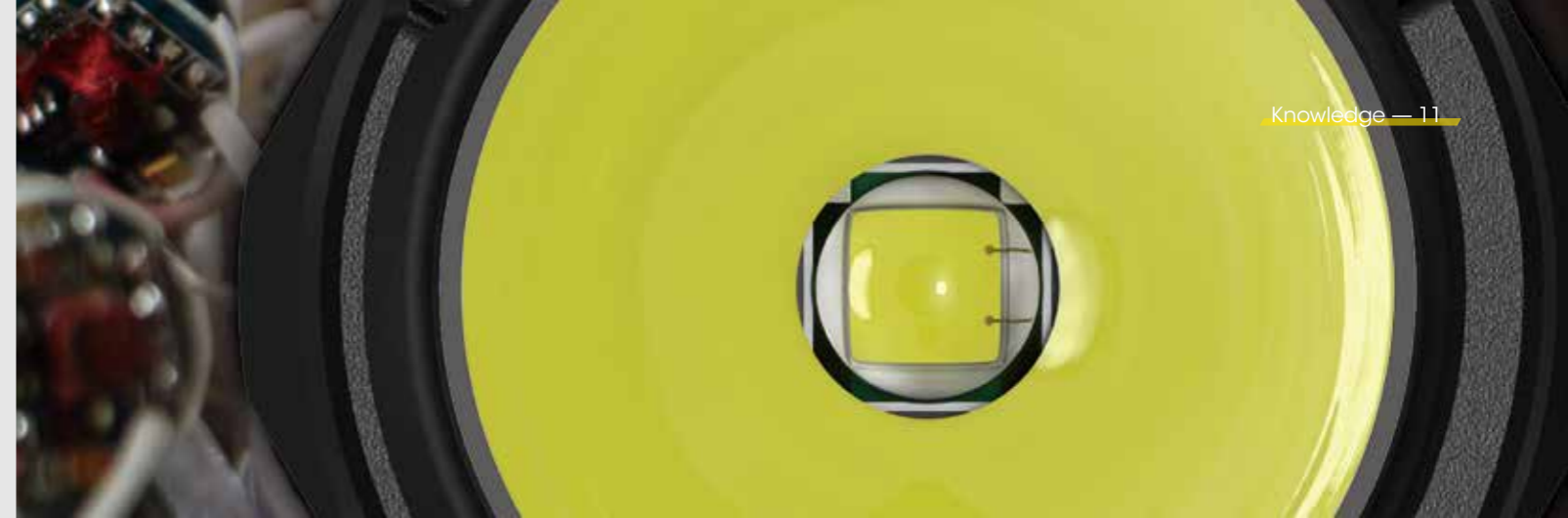
LEDs convert approximately 20% of their input power into light energy, whilst traditional incandescent bulbs generally only convert about 2% of their input power into light. As a result LED technology offers excellent energy efficiency, making it a cost effective and environmentally-friendly solution for modern light-emitting devices.

Longevity

Conventional incandescent technology is based on electron's travel through a tungsten filament, causing the filament to generate temperatures up to 2,500 degree Celsius, with light energy merely a byproduct of this process. Due to this inherently inefficient mechanism, incandescent bulbs rapidly deteriorate and burn out after about 1,000 hours of use. LEDs, on the other hand, operate on an entirely different principle. While they do require specialized components to achieve maximum brightness, a working lifespan up to 50,000 hours is possible, with a gradual fading of brightness rather than instant burn-out.


Durability

Due to the absence of a delicate filament and thin glass bulb, LEDs can withstand shock and vibration far stronger than incandescent lamps, making them ideal for rugged and demanding applications.




Quick Activation

An incandescent bulb generally takes about 100-300 milliseconds to illuminate once activated, while an LED needs only a few nanoseconds, giving it a significant advantage in highly demanding applications.



1% light
99% heat

Regular lamp



20% light
80% heat

LED

NITECORE'S Proprietary LED Technology...

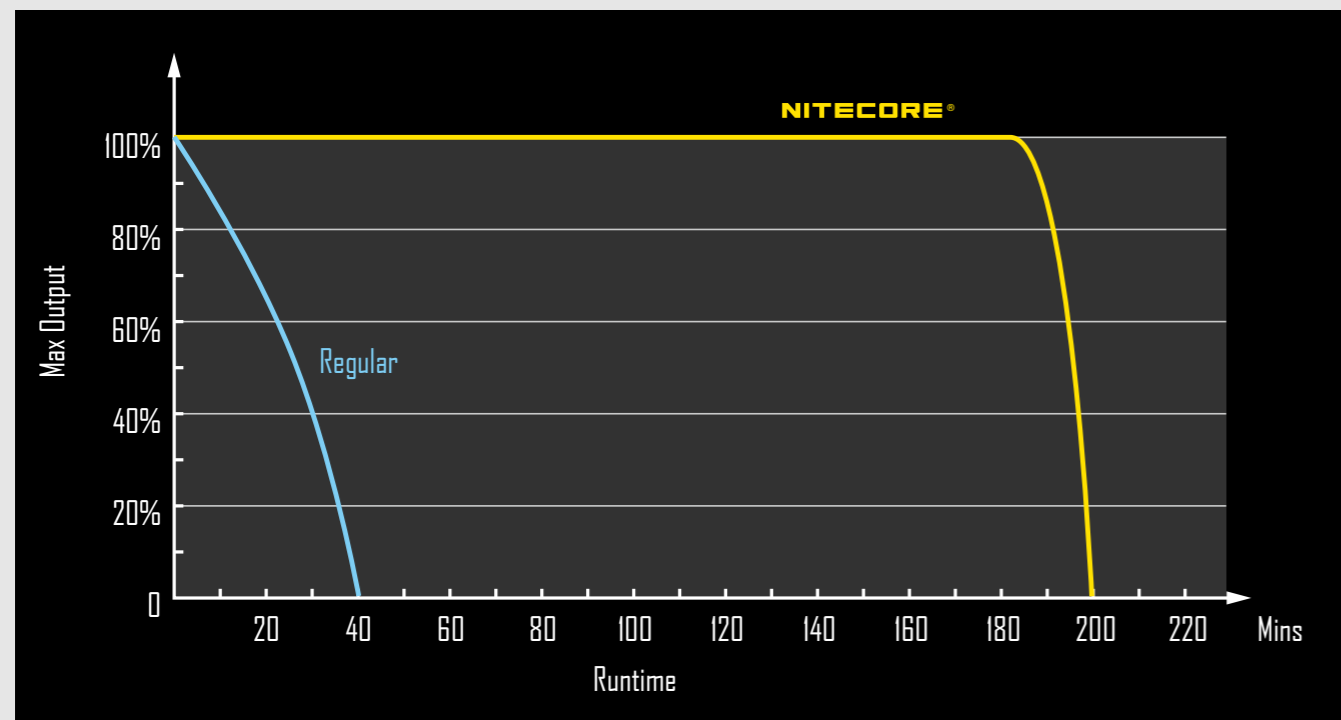
NITECORE's highly efficient, ultra reliable proprietary LED drive circuit plays a crucial role in efficiently transferring battery power to the LED. As a result, all NITECORE products have exceptional output and long runtimes in comparison to competing products. While the majority of LED-based flashlight/ personal lighting products on the market today suffer from continuously declining output, NITECORE products are able to maintain constant high output until battery exhaustion.



ADVANCED CIRCUITRY

NITECORE's proprietary regulation circuit is an essential component in every NITECORE flashlight. The circuit's unique power source management system delivers constant current to the LED regardless of battery condition/chemistry, resulting in continuous, unwavering light output for end users. The circuit's efficiency and reliability is further enhanced by carefully engineered electronic components such as gold or silver plated contact points. Moreover, every NITECORE flashlight features an integrated microcontroller unit which works in tandem with the regulation circuit to offer an intuitive and versatile user-interface.

An LED drive/regulation circuit is crucial in improving the efficiency of the 'power to light' conversion process, allowing for longer runtimes and more stable operation using various battery chemistries. NITECORE's highly reliable and compact drive circuit is the reason why NITECORE flashlights run longer and shine brighter than the competition.

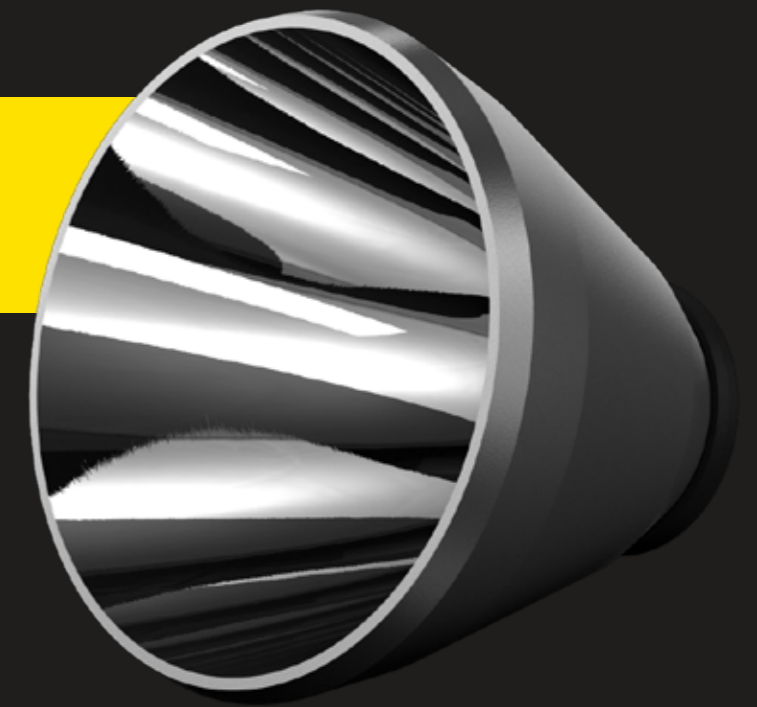


Lens and Reflectors

With many years of experience in flashlight optical design, NITECORE's custom-engineered high-efficiency alloy reflectors ensure every flashlight emit a balanced beam profile of both flood and throw with minimal loss of light. All NITECORE reflectors are protected by AR-coated, anti-scratch mineral glass lenses.

Precision Digital Optics Technology

PDOT utilizes digital simulation and precise point-to-point curved reflecting methods to optimize reflector performance. This ensures a more consistent, uniform and far-reaching beams capable of illuminating targets at distance.



COLOR RENDERING INDEX(CRI) >>>>

The Color Rendering Index (CRI) is a scale from 0 to 100 percent indicating how a light source makes the color of an object appear to human eyes, and how well subtle variations in color shades are revealed. Light sources with a high CRI are more likely to reveal the original colors of the object, thus becoming more desirable in the market since they can reduce eye strain and give a vibrant view.



CRI Value 90



CRI Value 70

NITECORE lights with high CRI: LA10CRI, LA30, LR10, LR30, TM03CRI, TIPCRI, NNU25, NU30



NEUTRAL WHITE >>>>

LED color temperatures can be divided into white light (about 6500K), neutral white (about 4000k) and warm white (about 3000K). Neutral white lighting strikes the perfect balance: it has high CRI ability and reduces eye strain, making it extremely easy for the users to see every detail of the object. Neutral white's relatively low color temperature and long wavelength allow it to further penetrate rainy and foggy weather, and its high luminous efficiency also saves battery power. That's why harsh outdoor situations require neutral white lights.

NITECORE neutral white lights: HC30W, MH12W, MH20W, EH1W, EH1SW, EC4SW, EA81W, EA41W



ULTRAVIOLET LIGHT >>>>

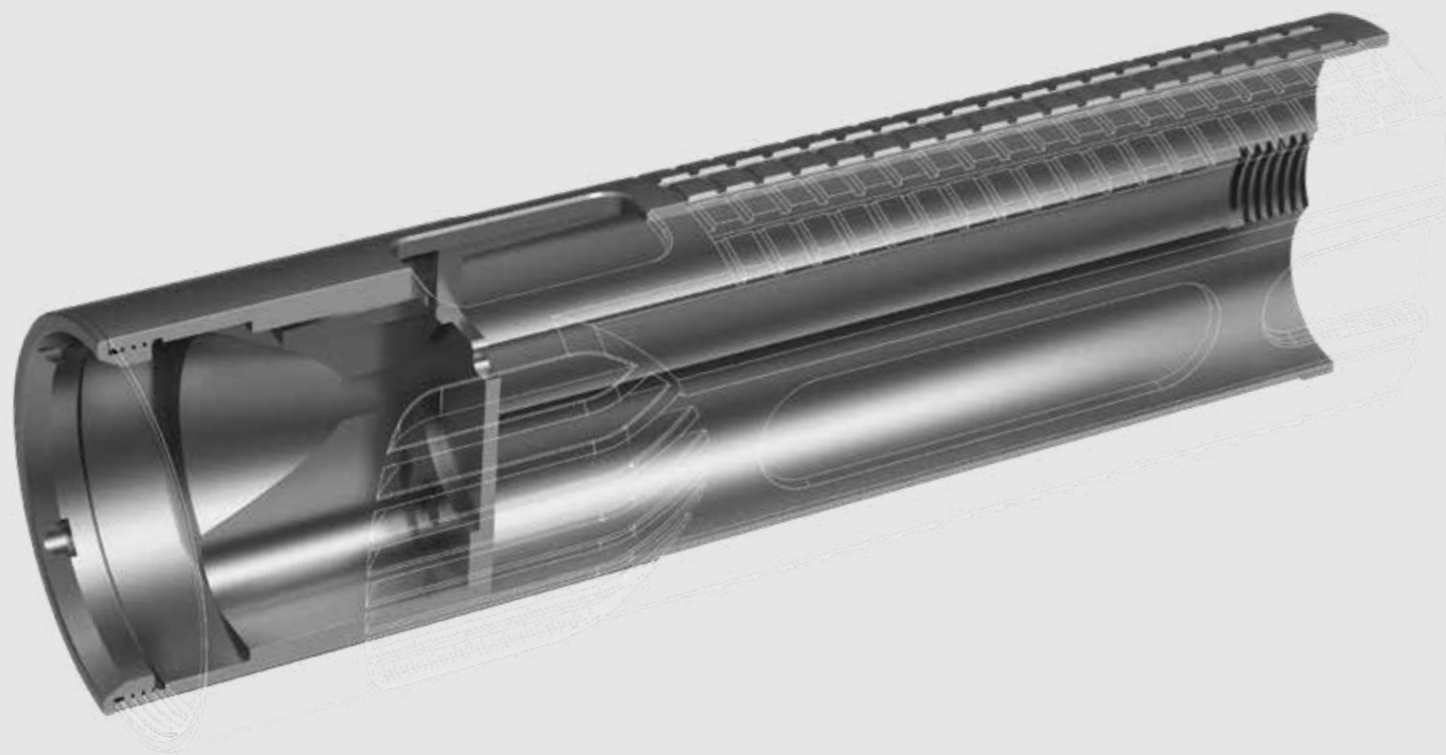
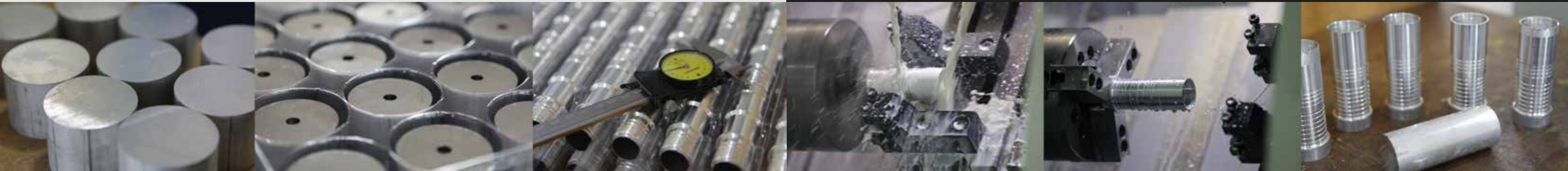
A UV light is a lamp that emits ultraviolet beams and not much visible light. UV light has shorter wavelengths than visible light, and is also known as black light. Ultraviolet LED flashlights are useful in many applications, including identifying forged documents, tracing marked bills, leakage/grease inspection, sanitary check, hunting scorpions etc.

NITECORE UV lights: P20UV, CU6, MH27UV, TUBE UV, THUMB LEO, MT1U



DIE-CASTING >>>

NITECORE is the first manufacturer to incorporate die casting into the making of a flashlight. This manufacturing process gives a flashlight a significant reduction in weight and size, and an increase in solidity and heat dissipation. Die-cast flashlights are extremely lightweight, compact and robust. Take the EC4 as an example, it is 37% smaller and 30% lighter than products of similar functionality and yet has 200% the strength of an ordinary CNC machined rival. By employing new techniques/technologies, NITECORE has always been innovating to offer significant gains in both ruggedness and performance.



BILLET ALUMINUM BODY >>>

Most of the NITECORE flashlights are constructed from lightweight, high strength aerospace grade aluminum alloy. Additionally, the majority of NITECORE models are CNC machined from a solid aluminum bar. This manufacturing process gives NITECORE flashlights their superior impact resistance. Many lights are able to withstand being rolled over by car or dropped from several meters onto a hard surface with no performance loss (not recommended as doing so may void warranty). Compared to other similar tubular aluminum flashlights, NITECORE flashlights offer significant strengths in both rigidity and performance. Furthermore, most of the NITECORE models are treated with a military-spec HAIII hard anodized finish, making the flashlight surface as tough as a diamond, thus protecting it from scratches, abrasions and corrosion.

LIGHTING



TINY MONSTER SERIES

All of our groundbreaking Tiny Monster models have thoroughly changed the way people think about portable lights, and more importantly, what they actually carry and use. Created for search and rescue as well as outdoor adventures, our Tiny Monster series is now employed in countless professional applications where bright lighting is needed.

NITECORE®



Outdoor



Search & Rescue





TM28 **Rechargeable**
 4×CREE XHP35 HI LEDs
 4×18650 Batteries
6000 Lumens

TM28 is an ideal search-and-rescue tool with supreme performance and grand throw, utilizing 4 Cree XHP35 HI LEDs to emit blinding 6000 lumens and a max beam distance of 655 meters to light up the darkness. It is compact in size while great in performance. The onboard OLED display shows real time information of the TM28.

- ◆ **Supreme Performance**
- ◆ **Compact**
- ◆ **OLED Display**

4×IMR18650 Batteries (for TM28)

Onboard OLED display gives overview for operating status

- Brightness level
- Battery level
- Battery voltage
- Remaining runtime
- Operating temperature

Output & Runtime

	FLI STANDARD	TURBO	HIGH	MID	LOW	ULTRALOW	STROBE	SOS	BEACON
		6000 lumens	2300 lumens	1000 lumens	320 lumens	2 lumens	6000 lumens	6000 lumens	6000 lumens
		45min	2h	4h30min	11h15min	1000h	---	---	---
		655m	420m	270m	153m	12m	---	---	---
		107200cd	44100cd	18400cd	5900cd	36cd	---	---	---
	1m (Impact Resistant)								
	IPX8, 2m (Waterproof And Submersible)								

TINY MONSTER SERIES

◀◀◀◀◀◀◀◀ TINY MONSTER SERIES ▶▶▶▶▶▶▶▶

Rechargeable
TM38 CREE XHP35 HI D4 LED
 NBP68HD Battery Pack
1800 Lumens
1400 Meters

Rechargeable
TM38LITE CREE XHP35 HI D4 LED
 4×18650 Batteries
1800 Lumens
1400 Meters

Rechargeable
TM26GT 4×CREE XP-L HI V3 LEDs
 4×18650 Batteries
 8×CR123 Batteries
3500 Lumens
704 Meters

Rechargeable
TM16GT 4×CREE XP-L HI V3 LEDs
 4×18650 Batteries
3600 Lumens
1003 Meters

STROBE READY!
TM03 CREE XHP 70 LED
 1×NI18650 Battery
2800 Lumens

TM06S 4×CREE XM-L2 U3 LEDs
 4×18650 Batteries
4000 Lumens

NITECORE®

PRECISE SERIES

NITECORE Precise Series flashlights are highly innovative illumination tools purpose-designed for law enforcement, hunting and tactical applications. With incredible user-interface design, these lights allow easy access to all modes and brightness levels. With blazingly bright output in turbo/strobe mode, exceptionally long runtimes in low mode and unique gun-mounting functionality, the Precise series flashlights are the ultimate lighting tools for increased tactical effectiveness.



Law Enforcement



Tactical



Hunting



P12GT

CREE XP-L HI V3 LED
1×18650 Battery

1000 Lumens

- ◆ Great Performance
- ◆ Compact
- ◆ One-handed Operation
- ◆ Beam distance: 320m

NITECORE®

As a representative of compact tactical flashlights, P12GT is ideal for EDC, searching and tactical applications. P12GT emits a superb beam distance and doubled intensity made possible by the revolutionary SC5 technology on the CREE XP-L HI V3 LED. Its max output is 1000 lumens and beam distance up to 320 meters. The side switch and tactical tail switch allows for all-rounded tactical operation.

Output & Runtime

FLI STANDARD	HIGH	MID	LOW	LOWER	STROBE	SOS	LOCATION BEACON
	1000 lumens	280 lumens	55 lumens	1 lumen	1000 lumens	1000 lumens	1000 lumens
1×18650	1h	5h15min	28h	520h	---	---	---
	320m	150m	66m	9m	---	---	---
	25700cd	5600cd	1100cd	21cd	---	---	---
	1m (Impact Resistant)						
	IPX8, 2m (Waterproof And Submersible)						

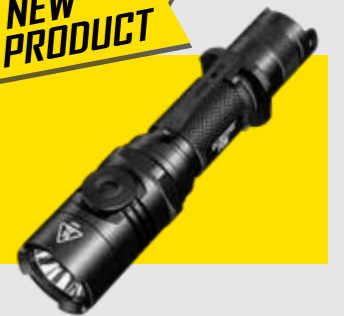
NEW PRODUCT

- ◆ 1000 Lumens
- ◆ Infinitely variable brightness
- ◆ Momentary on

P26

CREE XP-L HI V3 LED
1×18650 Battery
2×CR123 Batteries

1000 Lumens



Built for tactical use, the P26 can burst a MAX output of 1000 lumens and beam distance of 310m. The rotary switch allows for infinitely variable brightness adjustment from 0.5 to 1000 lumens and a strobe mode. Brightness level can be defined by adjusting the rotary switch in advance so as to be accessed instantly by pressing the tail switch. Get yourself ready for any challenge!

Output & Runtime

FLI STANDARD	TURBO	ULTRALOW	STROBE
	1000 lumens	0.5 lumens	1000 lumens
	1h	500h	---
	310m	7m	---
	24000cd	15cd	---
	1m (Impact Resistant)		
	IPX8, 2m (Waterproof And Submersible)		



Law Enforcement



Tactical

Chosen by military and law enforcement personnel in the domestic and overseas

- ◆ Strobe Ready™
- ◆ 3 Modes
- ◆ One-handed Operation

P20 CREE XM-L2 (U2) LED
1×18650 Battery
2×CR123 Batteries
800 Lumens



As an intuitive and precise tactical flashlight with maximum 800 lumens, P20 allows for easy one-handed operation and comes with three modes, including tactical mode, law enforcement mode and general mode. Strobe can be accessed instantly via the Strobe Ready™ switch in any state. The crenulated bezel serves as an effective tool in emergency situations, and it is compatible with multiple tactical accessories, which makes P20 the best choice for tactical and law enforcement applications.



STROBE READY™
access Strobe mode in any state

The Strobe Ready™ is designed with the lever principle, providing a maximum ease of use with glove.



365nm Ultraviolet Light
P20UV CREE XM-L2 U2 LED
1×18650 Battery
2×CR123 Batteries
800 Lumens
320 mW

For P20/P20UV



P20 Output & Runtime

FLI STANDARD	HIGH	MID	LOW	STROBE
	800 lumens	290 lumens	40 lumens	800 lumens
1×18650	4h30min	9h	26h	---
	210m	126m	47m	---
	11100cd	4000cd	550cd	---
	1m (Impact Resistant)			
	IPX8, 2m (Waterproof And Submersible)			

PRECISE SERIES

NEW PRODUCT



P12GTS CREE XHP35 HD LED
1×18650 Battery
2×CR123 Batteries
1800 Lumens
226 Meters



P16 TAC CREE XM-L2 (U3) LED
1×18650 Battery
2×CR123 Batteries
1000 Lumens



P05/P05 PINK CREE XM-L2 (U2) LED
1×CR123 Battery
1×RCR123 Battery
460 Lumens



P10GT CREE XP-L HI V3 LED
1×18650 Battery
2×CR123 Batteries
900 Lumens
286 Meters



P12 CREE XM-L2 U2 LED
1×18650 Battery
2×CR123 Batteries
1000 Lumens



P30 CREE XP-L HI V3 LED
1×18650 Battery
2×CR123 Batteries
1000 Lumens
618 Meters



P36 CREE MT-62 LED
2×18650 Batteries
4×CR123 Batteries
2000 Lumens

NITECORE®

PRECISE SERIES

SMART RING TACTICAL SERIES

NITECORE's new SRT series is the world's first line of flashlights to feature third generation SSR (smart selector ring) technology, offering infinitely variable brightness adjustment and unprecedented ease of use. The SSR interface allows users to select modes and brightness levels by simply rotating a smooth magnetic ring. This industry leading design is both user-friendly and extremely durable, making it ideal for law enforcement and tactical applications. The SRT series is yet another example of NITECORE innovation.

NITECORE®



Outdoor



Law Enforcement



Tactical



SRT9 CREE XHP50 LED
2×18650 Batteries
4×CR123 Batteries
2150 Lumens

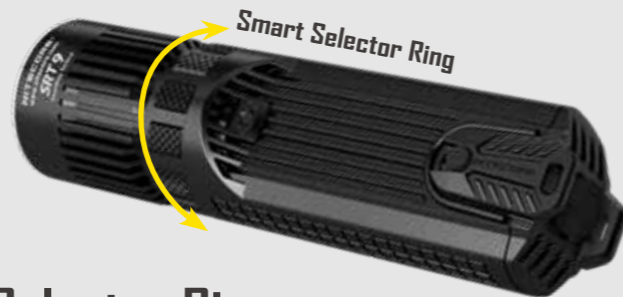
SRT9 is capable of emitting 2150 scorching lumens and throwing 246 meters in Turbo. The 3rd generation smart selector ring technology offers swift access to infinite brightness levels and special modes with a simple twist. SRT9 has a white light and RGB/UV auxiliary lights for various scenarios. The die-cast unibody construction makes it more compact, lightweight and have better heat dissipation to cope with complicated scenarios.

◆ **2150 Lumens**

◆ **4 colored LEDs**

◆ **Die-cast Unibody**

◆ **The 3rd Generation Smart Selector Ring**



Output & Runtime

FLI STANDARD	TURBO	ULTRALOW	RED	GREEN	BLUE	UV	BEACON	POLICE WARNING SIGNAL	STROBE
	2150 lumens	0.1 lumen	13 lumens	19 lumens	3 lumens	---	2150 lumens	---	2150 lumens
	1h	250h	50h	48h	48h	48h	---	55h	---
	246m	---	12m	15m	2m	---	---	---	---
	15100cd	---	35cd	55cd	2cd	---	---	---	---
	1m (Impact Resistant)								
	IPX8, 2m (Waterproof And Submersible)								

SMART RING TACTICAL SERIES



SRT7GT CREE XP-L HI V3 LED
1×18650 Battery
2×CR123 Batteries
1000 Lumens

- ◆ Grand Throw: 450m
- ◆ 4 Colored LEDs
- ◆ The 3rd Generation Smart Selector Ring

SRT7GT is a high output tactical flashlight with multi-colored LEDs. The CREE XP-L HI V3 LED integrated the groundbreaking SC5 technology, significantly to throw a beam distance up to 450 meters. The third generation Smart Selector Ring offers swift access to various brightness levels and functions, providing an enjoyable control in tactical operation.



Output & Runtime

FLI STANDARD	TURBO	ULTRALOW	RED	GREEN	BLUE	UV	STROBE	BEACON	POLICE WARNING SIGNAL
	1000 lumens	0.1 lumen	13 lumens	19 lumens	3 lumens	---	1000 lumens	1000 lumens	---
	1h15min	240h	28h	26h	26h	26h	---	---	32h
	450m	7m	8m	13m	3m	---	---	---	---
	50900cd	13cd	17cd	42cd	2.2cd	---	---	---	---
	1m (Impact Resistant)								
	IPX8, 2m (Waterproof And Submersible)								



Defender SRT3 CREE XM-L2 U2 LED
1×RCR123 Battery
1×CR123 Battery
1×AA Battery
550 Lumens



CHAMELEON SERIES

The Chameleon series is yet another unique and innovative offering from NITECORE. Featuring two main LEDs, one white and the other a choice of Red, Green, Blue, Ultraviolet or Infrared, Chameleon flashlights offer incredible versatility for a wide range of applications. Chameleon flashlights also include two smaller secondary LEDs which provide lower output red, green or blue for extended runtimes. Furthermore, a newly-designed double side-switch interface with integrated power indicator light allows one-handed operation while providing easy access to brightness levels and functions, including a unique multi-colored warning / hazard mode which rapidly alternates between red, green and blue. The industry-leading design of the Chameleon series is another proof of NITECORE's capacity for innovation.

NITECORE®



Hunting



Law Enforcement



Tactical

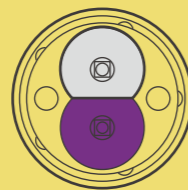


CU6 CREE XP-G2 LED
 1×18650 Battery
 2×CR123 Batteries 365nm Ultraviolet Light
440 Lumens **3000 mW**

CU6 is the first tactical flashlight that combined white light with high-power ultraviolet. In addition to its main LED with 440 lumens, CU6 also has a 365nm ultraviolet LED that projects a powerful 3000mW ultraviolet beam. The UV light can stimulate fluorescent material in the dark environments, making it ideal for fishing and hunting, documents authentication and identifying evidence for crime scene investigations and more.

- ◆ **4 Light Sources**
- ◆ **Dual Side Switches**
- ◆ **Tail Switch**

A powerful 3000mW ultraviolet LED is controlled via a convenient side switch



Ultraviolet Light: Stimulates fluorescent material in the dark environments, making it ideal for authentication of documents and identifying evidence for crime scene investigations.

Output & Runtime

FLI STANDARD	WHITE LIGHT TURBO	WHITE LIGHT HIGH	WHITE LIGHT MID	WHITE LIGHT LOW	WHITE LIGHT LOWER	UV	RED	GREEN	BLUE	POLICE WARNING SIGNAL	STROBE	SOS	BEACON
	440 lumens	280 lumens	160 lumens	25 lumens	1 lumen	---	1.8 lumens	3.8 lumens	0.7 lumen	---	440 lumens	440 lumens	440 lumens
	1×18650 1h45min	3h30min	7h	43h	400h	4h	65h	73h	82h	90h	---	---	---
	190m	132m	99m	42m	10m	---	---	---	---	---	---	---	---
	9000cd	4360cd	2450cd	460cd	28cd	---	---	---	---	---	---	---	---
	1m (Impact Resistant)												
	IPX8, 2m (Waterproof And Submersible)												

CHAMELEON SERIES



ISPO AWARD GOLD WINNER CR6



CREE XP-G2 LED
 CREE XP-E (R2) LED
 1×18650 Battery
 2×CR123 Batteries

440 Lumens



CREE XP-G2 LED
 CREE XP-E (G2) LED
 1×18650 Battery
 2×CR123 Batteries

440 Lumens



CREE XP-G2 LED
 CREE XP-E (D4) LED
 1×18650 Battery
 2×CR123 Batteries

440 Lumens



CREE XP-G2 LED
 1×18650 Battery
 2×CR123 Batteries

440 Lumens

1500 mW





RECHARGEABLE SERIES

Rechargeable Series are aimed at your ultimate maneuver. The smart charging docks keep your flashlights always fully-powered for any abrupt cases. With power-booster dedicated Li-ion batteries, all R Series flashlights are capable of emitting blinding blaze in no time, smashing up darkness and violence for your law enforcement and tactical tasks.



Law Enforcement



Tactical



Search & Rescue

RECHARGEABLE SERIES



STROBE READY!
ULTIMATE ONE-HANDED OPERATION

R25 CREE XP-L HI V3 LED
1×NL188DW Battery
2×CR123 Batteries

800 Lumens

- ◆ Smart Charging Dock
- ◆ Strobe Ready™
- ◆ Dedicated 18650 Li-ion Battery

As a winner of iF Design Award, R25 is your must-have gear for searching, rescuing and tactical applications, with a max output up to 800 lumens and a beam distance up to 321 meters. 3 modes available for different needs. STROBE READY™ button for quick access to Strobe. A dedicated NL188DW 3200mAh Li-ion battery and a smart charging dock included help you to fight at full power level.



Output & Runtime

FLI STANDARD	HIGH(MODE 1,2,3)	MID(MODE 3)	MID (MODE 2)	LOW (MODE 3)	STROBE
	800 lumens	230 lumens	120 lumens	50 lumens	800 lumens
	1h	9h	12h	15h	---
	321m	165m	126m	69m	---
	25800cd	6800cd	4000cd	1200cd	---
	1m (Impact Resistant)				
	IPX8, 2m (Waterproof And Submersible)				



INDUCTIVE CHARGING
INDUSTRY PINNACLE

R40 CREE XP-L HI V3 LED
1×NL2650DW Battery

1000 Lumens

520 Meters



MULTITASK HYBRID SERIES

NITECORE Multi-task Hybrid (MH) dual-fuel rechargeable flashlights are a new line of highly versatile and practical illumination tools designed for a multitude of users and applications. Featuring a high-precision long-range reflector, well-spaced brightness settings plus Strobe and SOS modes, the MH series is the ultimate lighting tools for hunting, trekking, camping, law enforcement, search and rescue.



Hunting



Tactical



Search & Rescue

MULTITASK HYBRID SERIES



MH27 CREE XP-L HI V3 LED
1×18650 Battery
2×CR123 Batteries
1000 Lumens

- ◆ High Intensity
- ◆ 4 Light Sources
- ◆ USB Rechargeable

NITECORE®



MH27 is the first USB rechargeable and tri-colored tactical flashlight to win Red Dot Award, possessing high output up to 1000 lumens and beam distance up to 462 meters, integrated 4 brightness levels and RGB auxiliary lights making MH27 a versatile tool for tactical use. USB charging port makes it convenient to recharge.

Strobe
Disorienting and blinding

S.O.S
Sending distress signal

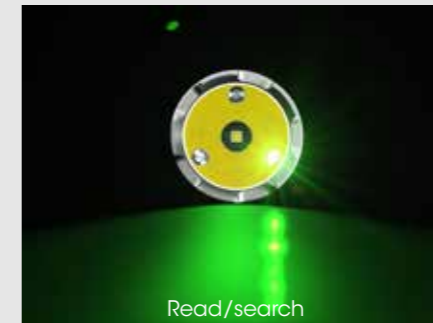
Location beacon
Signaling location

Red/Blue warning signal
Signifying emergencies



MH27UV 365nm Ultraviolet Light
CREE XP-L HI V3 LED
1×18650 Battery
2×CR123 Batteries
1000 Lumens
500 mW

THREE INDEPENDENT AUXILIARY RGB LEDS



MH27 Output & Runtime

FLI STANDARD	TURBO	HIGH	MID	ULTRALOW	RED	GREEN	BLUE	STROBE	SOS	LOCATION BEACON	BLUE AND RED WARNING SIGNAL	RED WARNING SIGNAL	BLUE WARNING SIGNAL
	1000 lumens	250 lumens	55 lumens	1 lumen	13 lumens	19 lumens	3 lumens	1000 lumens	1000 lumens	1000 lumens	---	13 lumens	3 lumens
	1h	6h15min	28h	708h	28h	28h	28h	---	---	---	40h	40h	40h
	462m	200m	98m	12.6m	9m	12.6m	1.8m	---	---	---	---	---	---
	53500cd	10000cd	2400cd	40cd	20cd	40cd	0.8cd	---	---	---	---	---	---
	1m (Impact Resistant)												
	IPX8, 2m (Waterproof And Submersible)												



USB CHARGING

MH12GT CREE XP-L HI V3 LED
1×18650 Battery
2×CR123 Batteries

1000 Lumens

- ◆ Grand Throw: 320m
- ◆ USB Rechargeable
- ◆ An 18650 Battery Included

MH12GT is a rechargeable grand throw flashlight that emits maximum 1000 lumens and beam distance up to 320 meters. The side switch and tail switch are specially designed for tactical and outdoor applications. An included 18650 Li-ion battery with large capacity and long runtime makes it ideal for hunting, law enforcement, searching and more scenarios.

Output & Runtime

FLI STANDARD	HIGH	MID	LOW	ULTRALOW	STROBE	SOS	LOCATION BEACON
	1000lumens	280 lumens	55 lumens	1 lumen	1000 lumens	1000 lumens	1000 lumens
	1h15min	6h	28h	520h	---	---	---
	320m	150m	56m	9m	---	---	---
	25700cd	5700cd	800cd	21cd	---	---	---
	1m (Impact Resistant)						
	IPX8, 2m (Waterproof And Submersible)						

MULTITASK HYBRID SERIES

NEW PRODUCT

USB CHARGING

MH12GTS CREE XHP35 HD LED
1×18650 Battery
2×CR123 Batteries

1800 Lumens

226 Meters

NEW PRODUCT

USB CHARGING

MH25GTS CREE XHP35 HD LED
1×1MR18650 Battery
2×CR123 Batteries

1800 Lumens

304 Meters

MULTITASK HYBRID SERIES

USB CHARGING

MH25GT CREE XP-L HI V3 LED
1×18650 Battery
2×CR123 Batteries

1000 Lumens

452 Meters

NEW PRODUCT

USB CHARGING

MH23 CREE XHP35 HD LED
1×18650 Battery
2×CR123 Batteries

1800 Lumens

USB CHARGING

MH20 CREE XM-L2 U2 LED
1×18650 Battery
2×CR123 Batteries

1000 Lumens

USB CHARGING

MH20GT CREE XP-L HI V3 LED
1×18650 Battery
2×CR123 Batteries

1000 Lumens

362 Meters

USB CHARGING

MH10 CREE XM-L2 U2 LED
1×18650 Battery
2×CR123 Batteries

1000 Lumens

Rechargeable

MH40GT CREE XP-L HI V3 LED
2×18650 Batteries
4×CR123 Batteries

1000 Lumens

803 Meters

BOOSTED FIRE/GRAND THROW

Rechargeable

MH41 CREE XHP50 LED
2×18650 Batteries
4×CR123 Batteries

2150 Lumens

EMITS 2150 LUMENS WITH A QUAD-DIE CREE XHP50 LED

NITECORE®

MULTI-TASK SERIES

Multi-Task flashlight series is a line of highly versatile and practical illumination tools designed for a multitude of users and environments. The maximum output ranges from MT1A's 180 lumens to MT40GT's 1,000 lumens. A sleek, robust body finely etched with extensive knurling and a perfect finish is a hallmark of this range, but even more important is the highly practical and usable user-interface which makes selecting modes a breeze. NITECORE MT series flashlights are your ultimate lighting tools for various environments.



MULTI-TASK SERIES



MT06MD

Nichia 219B LED
2×AAA Batteries

180 Lumens

- ◆ High CRI Output
- ◆ Default Low Mode
- ◆ Photobiologically Safe(RGO)

Designed for Medical Personnel and First Responders

MT06MD is specially designed for medical personnel and first responders, utilizing a high color rendering (CRI>90) Nichia 219B LED that resembles the nature of sunlight, thus allowing medical personnel and first responders to see every detail of the object while eliminating the potential of blue-light hazard. The default mode protects human eyes from glare. Three brightness levels are selectable based on different needs, making MT06MD an essential tool for doctors and nurses.

Output & Runtime

FLI STANDARD	HIGH	MID	LOW
	180 lumens	45 lumens	4 lumens
	45min	5h15min	35h
	58m	28m	11m
	860cd	194cd	30cd
	1m (Impact Resistant)		
	IPX8, 2m (Waterproof And Submersible)		

- ◆ 1800 Lumens
- ◆ 470m Long Throw
- ◆ Simple Operation

MT42

CREE XHP35 HD LED
2×18650 Batteries

1800 Lumens



NEW PRODUCT

Specially designed for night hunting and searching, the MT42 provides a wide range illumination with output up to 1800 lumens and throw of 470m. With a forward tail switch and a metal side switch, Strobe mode can be pre-set and accessed instantly by pressing the tail switch. The 50mm head is compatible with multiple accessories, making it ideal for hunter, outdoorsmen and law enforcement personnel.

Output & Runtime

FLI STANDARD	TURBO	HIGH	MID	LOW	ULTRALOW	STROBE	BEACON	SOS
	1800 lumens	800 lumens	280 lumens	68 lumens	1 lumen	1800 lumens	1800 lumens	1800 lumens
	1h	3h30min	12h	45h	530h	---	---	---
	470m	312m	175m	92m	10m	---	---	---
	55400cd	24300cd	7670cd	2100cd	26cd	---	---	---
	1m (Impact Resistant)							
	IPX8, 2m (Waterproof And Submersible)							



NEW PRODUCT



MT21C CREE XP-L HD V6 LED
1×18650 Battery
2×CR123 Batteries

1000 Lumens

The MT21C multi-functional flashlight uses an innovative 90° tiltable head, which can be used as a streamlined everyday carry torch or a versatile angled work light. It is a great choice for industrial work, auto-repair, outdoors, tactical use etc.

- ◆ Compact EDC Torch
- ◆ L-shaped Work Light
- ◆ Magnetic Base
- ◆ Metal Loop



Output & Runtime

FLI STANDARD	TURBO	HIGH	MID	LOW	ULTRALOW	STROBE	BEACON	SOS
	1000 lumens	400 lumens	190 lumens	50 lumens	1 lumen	1000 lumens	1000 lumens	1000 lumens
	1h	3h45min	7h30min	25h	700h	---	---	---
	184m	122m	85m	42m	6m	---	---	---
	8500cd	3720cd	1800cd	450cd	10cd	---	---	---
	1m (Impact Resistant)							
	IPX8, 2m (Waterproof And Submersible)							

MULTI-TASK SERIES

MULTI-TASK SERIES

Multiple Colors Available





MT22A CREE XP-G2 S3 LED
2×AA Batteries

260 Lumens

NEW PRODUCT



MT22C CREE XP-L HD V6 LED
1×18650 Battery
2×CR123 Batteries

1000 Lumens



MT40GT CREE XP-L HI V3 LED
2×18650 Batteries
4×CR123 Batteries

1000 Lumens

618 Meters



MT2A CREE XP-G2 R5 LED
2×AA Batteries

345 Lumens



MT1U 1×18650 Battery
2×CR123 Batteries

365nm, 900mW



MT1A CREE XP-G2 R5 LED
1×AA Battery

180 Lumens



MT1C CREE XP-G2 R5 LED
1×CR123 Battery

345 Lumens



MT20C CREE XP-G2 R5 LED
1×18650 Battery
2×CR123 Batteries

460 Lumens

NITECORE®

EXPLORER SERIES

The NITECORE Explorer series flashlights are designed with outdoor sportsmen in mind. Utilizing a highly tactile user interface with attractive appearance, these ultra-compact lights, ranging from the thumb-sized EC11 to the 8xAA powered searchlight EA81, are ideal for hiking, camping, searching and caving, providing the avid outdoorsmen with unprecedented output performance and ultimate illumination experience.



Outdoor



Industrial workplace



EDC

EXPLORER SERIES



EC4S CREE XHP50 LED
2×18650 Batteries
4×CR123 Batteries
2150 Lumens

- ◆ 2150 Lumens
- ◆ Die-cast Unibody
- ◆ One-handed Operation

NITECORE®

As a winner of ISPO Award, EC4S comes with a small size and outstanding performance, utilizing a CREE XHP50 LED to deliver blinding 2150 lumens. Die-cast unibody makes it lightweight, portable and rugged. Dual switch design provides one-handed operation, which is ideal for trekking, hiking, searching and everyday carry.

Extreme RIGIDITY

By injecting molten aluminum under high pressure into mold cavity, the die casting process ensures each EC4S is made with supreme structural integrity and has 200% the strength of an ordinary flashlight that consists of three separate parts.



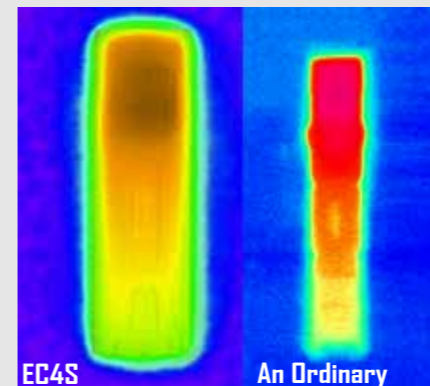
NITECORE EC4S



An ordinary

200% THE STRENGTH

Thermography



EC4S

An Ordinary



Extreme Cooling Performance

EC4S's die-cast body has a low thermal resistance and the highest level of structural integrity, which ensures that heat is distributed evenly and rapidly to the surface. The cooling fins give EC4S a cooling surface 30% larger than an ordinary.



Output & Runtime

FLI STANDARD	TURBO	HIGH	MID	LOW	ULTRALOW	STROBE	SOS	LOCATION BEACON
	2150 lumens	1100 lumens	400 lumens	80 lumens	2 lumens	2150 lumens	2150 lumens	2150 lumens
	2×18650 45min	2h15min	6h15min	30h45min	325h	---	---	---
	280m	177m	113m	41m	4.8m	---	---	---
	19600cd	7800cd	3200cd	420cd	5.8cd	---	---	---
	1m (Impact Resistant)							
	IPX8, 2m (Waterproof And Submersible)							



EC23 CREE XHP35 HD E2 LED
1×18650 Battery
2×CR123 Batteries
1800 Lumens

- ◆ 1800 Lumens
- ◆ Compact
- ◆ Single switch UI

EC23 is designed with the concept of "compact in size while powerful in performance". In such a portable and compact size, it can emit a maximum 1800 scorching lumens. The side switch is specially designed for outdoor applications that controls 5 brightness levels and 3 special modes. Running on one 18650 Li-ion battery with runtime up to 330 hours, it is an ideal tool for general use and outdoor application.

Output & Runtime

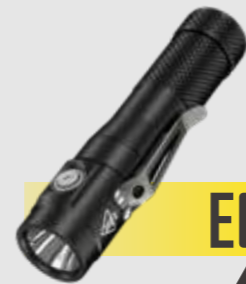
FLI STANDARD	TURBO	HIGH	MID	LOW	ULTRALOW	STROBE	SOS	BEACON
	1800 lumens	980 lumens	300 lumens	55 lumen	1 lumen	1800 lumens	1800 lumens	1800 lumens
1×IMR18650	30min	1h15min	4h15min	20h	300h	---	---	---
	255m	165m	87m	35m	5m	---	---	---
	16200cd	6800cd	1900cd	300cd	7cd	---	---	---
	1m (Impact Resistant)							
	IPX8, 2m (Waterproof And Submersible)							

EXPLORER SERIES



EC22 CREE XP-L HD V6 LED
1×18650 Battery
2×CR123 Batteries
1000 Lumens

NEW PRODUCT



EC30 CREE XHP35 HD E2 LED
1×18650 Battery
2×CR123 Batteries
1800 Lumens

NEW PRODUCT

EXPLORER SERIES

NEW PRODUCT



EC4GTS CREE XHP35 HD LED
2×18650 Batteries
1800 Lumens
396 Meters

NEW PRODUCT



EA42 CREE XHP35 HD LED
4 × AA Ni-MH Batteries
1800 Lumens



EA81 CREE XHP50 LED
8×AA Batteries
2150 Lumens



EA41 CREE XM-L2 U2 LED
4×AA Batteries
1020 Lumens



EC11 CREE XM-L2 U2 LED
1×CR123 Battery
1×IMR18350 Battery
900 Lumens



EC20 CREE XM-L2 U2 LED
1×18650 Battery
2×CR123 Batteries
960 Lumens

NITECORE®



T SERIES

Tseries is a collection of mini keychain lights designed for everyday carry. Small yet powerful, each light comes with powerful features in an extremely mini package. With a built-in Li-ion battery and a Micro-USB port, it offers flexible charging options and ultimate convenience of use, making it the best EDC gadget that you will carry every day.



Outdoor



Law Enforcement



EDC

T SERIES



USB CHARGING

TINI CREE XP-G2 S3 LED
Rechargeable
Li-ion battery
380 Lumens

- ◆ 380 Lumens
- ◆ Micro-USB
- ◆ Mini and Lightweight

If you have strict requirements on keychain light, then TINI may be your best choice. It distinguished itself with a minimized body and great performance that emits a max output of 380 lumens. Built-in 280mAh Li-ion battery can be recharged via USB port. Dual switches control 4 brightness levels based on general needs. Onboard FPC heat dissipating system with small thermal resistance allows for maximum heat dissipation surface.



Electroplated Silver Edge

Electroplated Light-Permeable Switches

Customized Torx Screws



Multiple Colors Available

Output & Runtime

FLI STANDARD	TURBO	HIGH	MID	LOW
	380 lumens	145 lumens	38 lumens	1 lumen
	15min	1h	4h	60h
	64m	40m	19m	3.9m
	1020cd	400cd	95cd	3.8cd
	1m (Impact Resistant)			
	IP54 rating			



NEW PRODUCT

USB CHARGING

TINI Cu CREE XP-G2 S3 LED
Rechargeable
Li-ion battery
380 Lumens





STAINLESS STEEL metallic keychain light



TIP SS CREE XP-G2 S3 LED
Rechargeable Li-ion battery
360 Lumens



Multiple Colors Available



TROPICAL

GLACIER

JET BLACK

NEW PRODUCT

CREE XP-G2 S3 LED
Rechargeable Li-ion battery

TIP Cu

360 Lumens



TIP CREE XP-G2 S3 LED
Rechargeable Li-ion battery

360 Lumens



Nichia Z198 LED
Rechargeable Li-ion battery

TIP CRI

240 Lumens



Multiple Colors Available



T SERIES

◀◀◀◀◀◀◀◀ T SERIES ▶▶▶▶▶▶▶▶



T360 High performance LED
Rechargeable Li-ion battery
45 Lumens



T360M High performance LED
Rechargeable Li-ion battery
45 Lumens



THUMB 2 high performance LEDs
Rechargeable Li-ion battery
85 Lumens



THUMB LED 365nm Ultraviolet Light
Rechargeable Li-ion battery
500 mW



TUBE High performance LED
Rechargeable Li-ion battery
45 Lumens



Multiple Colors Available



TUBE UV
500 mW



TUBE GL
25 Lumens



TUBE RL
13 Lumens



TUBE BL
4 Lumens

NITECORE®

NU SERIES



NITECORE NU series are lightweight, lithium-powered illumination tools featuring uniform 100° wide beams, high output main LEDs, lower output secondary colored LEDs and bodies crafted from durable PC materials. Purpose-designed for hiking, climbing, camping and general outdoor recreation, NITECORE headlamps set new standards in output, functionality, comfort and runtime.

■ Rechargeable

■ Built-in Li-ion battery

■ Lightweight



Cycling



Outdoor



Search & Rescue



Running





NU25 CREE XP-G2 S3 LED
Rechargeable
Li-ion battery

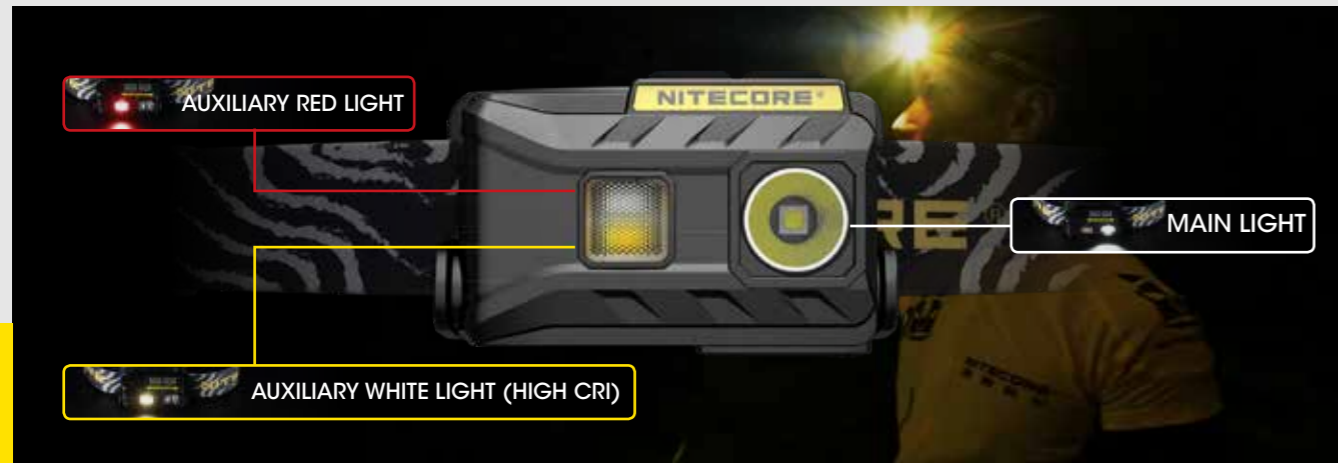
360 Lumens



Multiple Colors Available ● ● ●

NU25 is a triple outputs rechargeable headlamp, including 360 lumens main light, an auxiliary red light and an auxiliary high CRI light. Red light protects dark vision and high CRI light reveals the natural color of objects. Built-in a 2.26Wh high capacity Li-ion battery with a max runtime of 160 hours, making it ideal for multiple scenarios.

- ◆ Triple Outputs
- ◆ Rechargeable
- ◆ Lightweight



Output & Runtime

FLI STANDARD	TURBO	HIGH	MID	LOW	AUXILIARY WHITE LIGHT	RED LIGHT (LOW)	RED LIGHT (HIGH)	RED CAUTION LIGHT	SOS	BEACON
	360 lumens	190 lumens	38 lumens	1 lumen	20 lumens	0.9 lumen	13 lumens	13 lumens	360 lumens	360 lumens
	30min	5h	8h	160h	6h15min	68h	7h45min	13h	---	---
	81m	61m	27m	3.8m	5.5m	---	4m	---	---	---
	1650cd	950cd	190cd	3.7cd	7.5cd	---	4cd	---	---	---
	1m (Impact Resistant)									
	IP66 Rating									

NU SERIES

NU SERIES



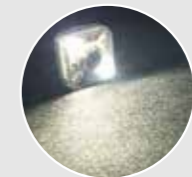
WINNER OF CHINA GOOD DESIGN AWARD 2017



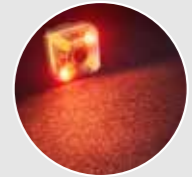
NU05 4 high performance LEDs
Rechargeable
Li-ion battery

Headlamp Mate

35 Lumens



White light



Red light



Multiple Colors Available



NU30 CREE XP-G2 S3 LED
Rechargeable
Li-ion battery

400 Lumens



Multiple Colors Available



NU20 CREE XP-G2 S3 LED
Rechargeable
Li-ion battery

360 Lumens



Multiple Colors Available



NU10 5 high performance LEDs
Rechargeable
Li-ion battery

160 Lumens

NITECORE®

HEADLAMP SERIES

It is a series of multipurpose headlamps suits for night running, hiking, caving, outdoor adventure and more. Headlamps of this series are high-performance and extremely lightweight, featuring scorching output, long runtime and great reliability.



Outdoor



Industrial
workplace



Search & Rescue



Hiking/Trekking




MAGNETIC

HC33 CREE XHP35 HD LED
1×18650 Battery
2×CR123 Batteries

1800 Lumens

- ◆ 1800 Lumens
- ◆ High Performance
- ◆ Utility

As a versatile high performance L-shaped headlamp, HC33 is capable of outputting a max 1800 lumens and a beam distance up to 187 meters. It is not only a headlamp but also a L-shaped handheld torch when it is detached from the headband. The HC33 has a flood lighting system which produces a wide beam angle. It is easy and convenient for general use with one switch.

Output & Runtime

FLI STANDARD	TURBO	HIGH	MID	LOW	ULTRALOW	STROBE	SOS	BEACON
	1800 lumens	780 lumens	240 lumens	70 lumens	1 lumen	1800 lumens	1800 lumens	1800 lumens
1×18650	30min	1h30min	5h15min	15h	300h	---	---	---
	187m	117m	63m	35m	4m	---	---	---
	8750cd	3400cd	1000cd	300cd	4.5cd	---	---	---
	1m (Impact Resistant)							
	IP68, 2m (Waterproof And Submersible)							




USB CHARGING

HC65 CREE XM-L2 U2 LED
1×18650 Battery
2×CR123 Batteries

1000 Lumens

- ◆ Triple Outputs
- ◆ USB Rechargeable
- ◆ 1000 Lumens
- ◆ 1×18650 Li-ion Battery included

HC65 is a triple-output full metal headlamp with a main LED emitting 1000 lumens, an auxiliary red light and a high CRI auxiliary light. It can be recharged via the on-board Micro-USB port. An included 3400mAh Li-ion battery drives it for a maximum runtime of 800 hours, saving the need of frequent battery replacement.

Output & Runtime

FLI STANDARD	TURBO	HIGH	MID	LOW	ULTRALOW	AUXILIARY WHITE LIGHT	RED LIGHT ILLUMINATION	RED CAUTION LIGHT	STROBE	SOS	BEACON
	1000 lumens	550 lumens	280 lumens	80 lumens	1 lumen	26 lumens	11 lumens	11 lumens	1000 lumens	1000 lumens	1000 lumens
1×18650	1h	2h45min	4h45min	16h	800h	25h	20h	32h	---	---	---
	110m	78m	56m	29m	3.6m	6.6m	4m	---	---	---	---
	3000cd	1530cd	780cd	210cd	3.3cd	11cd	4.5cd	---	---	---	---
	1m (Impact Resistant)										
	IPX8, 2m (Waterproof And Submersible)										

HEADLAMP SERIES

Specially designed for caving



HC70 CREE XM-L2 U2 LED
2×18650 Batteries

1000 Lumens



HC30 CREE XM-L2 U2 LED
1×18650 Battery
2×CR123 Batteries

1000 Lumens



HC60 CREE XM-L2 U2 LED
1×18650 Battery
2×CR123 Batteries

1000 Lumens

USB CHARGING



HA40 CREE XM-L2 U2 LED
4×AA Batteries

1000 Lumens

NITECORE®

LANTERN SERIES

NITECORE Lantern series products are professionally designed for camping. With a CRI rating ≥ 90 , the lanterns emit a beam that is more close to natural daylight to avoid eye fatigue and reveal subtle details of objects. A single switch controls all brightness levels and modes, ideal for camping, excursion, working at night, night photography, everyday carry and so on.



Outdoor



Photography



Camping

GOOD DESIGN
ISPO AWARD
DESIGN AWARD 2017

LA10 CREE XP-G2 S3 LED
1×AA Battery
135 Lumens MAGNETIC

LA10CRI Nichia 219B LED
1×AA Battery
85 Lumens MAGNETIC

- ◆ **Lipstick-shaped**
- ◆ **Extendable and Retractable Diffuser**



LA10 Output & Runtime

FLI STANDARD	HIGH	MID	LOW
	135 lumens	40 lumens	10 lumens
	1h30min	6h	23h
	10m	5.7m	2.8m
	28cd	8cd	2cd
	1m (Impact Resistant)		
	IPX6 (Waterproof)		

LANTERN SERIES



USB CHARGING
Multiple Colors Available

LR10 9 high CRI LEDs
Rechargeable Li-ion battery
250 Lumens MAGNETIC



LR10 PANDA

NEW PRODUCT

Bi-fuel High CRI Camping Lantern

LA30 8 high performance white LEDs and 3 red LEDs
Rechargeable Li-ion battery
2×AA Batteries
250 Lumens MAGNETIC
USB CHARGING

LA30 is an innovative hybrid camping lantern that features USB rechargeable built-in 1800mAh Li-ion battery or AA batteries as power sources. Utilizing 8 white LEDs and 3 auxiliary red LEDs. Integrated a metal loop and a magnetic base on tail for hands-free use.

- ◆ **Dual Power Sources**
- ◆ **Palm-sized body**
- ◆ **Dual Outputs**

Two Colors Available



Output & Runtime

	HIGH	MID	LOW	RED LIGHT (HIGH)	RED LIGHT (LOW)	RED SOS	RED BEACON
Output	250 lumens	55 lumens	8 lumens	40 lumens	5 lumens	40 lumens	40 lumens
Runtime	Built-in Li-ion Battery	4h	9h15min	56h	7h15min	48h	---
	2×AA	3h	7h30min	48h	6h	40h	---
Beam Diameter	35m (MAX)						
Beam Intensity	80cd (MAX)						
Impact Resistance	1m						
Waterproof	IP66						



Multiple Colors Available

LR30 6 high performance white LEDs and a red LED
1×18650 Battery / 2×CR123 Batteries
205 Lumens MAGNETIC



NEW PRODUCT

LR12 CREE XP-L HD V6 LED
1×18650 Battery
2×CR123 Batteries
1000 Lumens MAGNETIC

NITECORE®

EXPLOSION-PROOF SERIES

To meet the demand of market, NITECORE has developed explosion-proof series. It is suitable for various flammable and explosive sites and underground operations, serving as portable lighting for electric power industry, metallurgical industry, petroleum industry, railway, fire fighting, factories and mines.



Industrial workplace

EXPLOSION-PROOF SERIES



EF1 CREE XM-L2 U3 LED
1×18650 Battery

830 Lumens



ATEX Credential
Ex II 2 G Ex d IIC T6 Gb



PCEC Credential
Ex d IIC T5 Gb



EHI Credential
Ex ib IIB T5 Gb
SHEXC16.0340



EHS Credential
Ex ib IIB T5 Gb
SHEXC16.0341



CREE XP-G2 S3 LED
2X18650 Batteries (Built-in)
EHI
260 Lumens



CREE XP-G2 S3 LED
1X18650 Battery (Built-in)
EHS
260 Lumens

NITECORE®





Charging Rack Series

EXPLOSION-PROOF SERIES

FEATURES	SPECIFICATIONS		
Model	NCR30	NCR60	NCR100
AC input	AC90 265V, 50~60Hz	AC90 265V, 50~60Hz	AC90 265V, 50~60Hz
DC output voltage	5V	5V	5V
DC output current	1A	1A	1A
Dimensions	1640*900*198 mm	1640*900*355 mm	1640*1380*355 mm
Wegiht	72kg	103kg	135kg
Charging time for EHI	8h	8h	8h
Charging time for EHIS	4h	4h	4h



Charger NCR01

FEATURES	SPECIFICATIONS
Model	NCR01
AC input	AC90-265V, 50~60Hz
DC input	10-15V
DC output voltage	5V
DC output current	1A
Dimensions	110*80*50mm
Wegiht	0.13 kg
Charging time for EHI	8h
Charging time for EHIS	4h



Adapter ACW

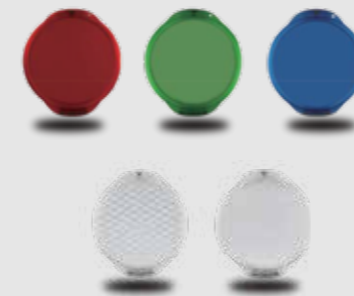
FEATURES	SPECIFICATIONS
Model	Adapter ACW
Output	5V, 2A
Charging time for EHI	8h
Charging time for EHIS	4h



Car adapter DCW

FEATURES	SPECIFICATIONS
Model	Car adapter DCW
Input	DC12-24V
Output	DC5V±0.25V, 2A
Material	ABS
Charging time for EHI	8h
Charging time for EHIS	4h

EFR/G/B/W1/W2



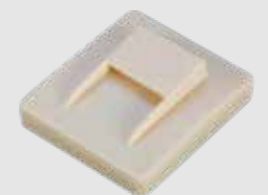
NEM

Mounting the EHI/ EHIS on a tripod



NEMC

Mounting the EHI/ EHIS on any metal surface



DIVING LIGHT SERIES

NITECORE Diving Light Series is specially designed for underwater sports. Integrated white light and red auxiliary light serve for supplementary lighting underwater. High-strength aerospace aluminum body is hard anodized with a Mil-Spec finish for extreme durability and corrosion resistance.



Diving



DL10 CREE XP-L HI V3 LED
1×18650 Battery
2×CR123 Batteries

1000 Lumens

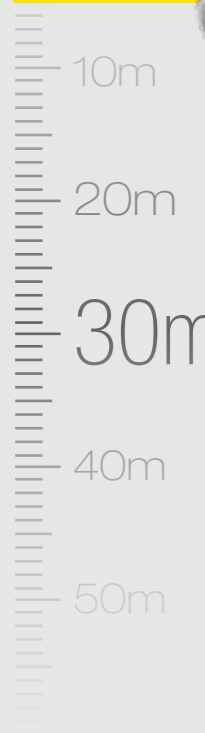


Photo with using DL10 for light supplement



Photo without using light supplement



Outdoor



Industrial workplace



Cycling

BIKE LIGHT SERIES

NITECORE Bike Light Series utilizes the patented diffuse reflection board to scatter beams evenly to the ground, which eliminates lighting dead zones to ensure users' safety. The innovative dual-distance beam allows for both near and far illumination. Onboard high definition OLED screen displays real-time data and the user-friendly switches provide easy operation. Ensuring users' safety and excellent riding experience in night riding, NITECORE bicycle light is the best choice for users.

NEW PRODUCT



BR35 2 CREE XM-L2 U2 LEDs
Rechargeable Li-ion battery

1800 Lumens



CITY MODE



ROAD MODE



TRAIL MODE

Side View

Dual distance beams can be alternated optionally based on users' needs. Integrated the diffuse reflection to scatter lights and cover the whole front wheel area.



CONCEPT SERIES

As the flagship product series of NITECORE flashlights, the Concept Series combines the revolutionary performance with innovative design, intending to make a breakthrough in current illumination industry and bring a brand new illumination experience to users.



Outdoor



EDC

NEW PRODUCT

CONCEPT 2

4 CREE XHP35 HD LEDs
Rechargeable Li-ion battery

6500 Lumens

NITECORE

As a new release of Concept Series, the Concept 2 uses 4 high power LEDs to burst output up to 6500 lumens, features a combination of remarkable performance and innovative design. It comes with a special square tube and cutting-edge technology. The Concept 2 will be your ultimate tool for tactical use, search and self-defense.

- ◆ **6500 Lumens**
- ◆ **Intelligent charging circuit**
- ◆ **Built-in 12400mAh High Drain Li-ion Batteries**

Output & Runtime

FLI STANDARD	TURBO	HIGH	MID	LOW	ULTRALOW	STROBE	SOS	BEACON
	6500 lumens	2500 lumens	1000 lumens	285 lumens	1 lumen	6500 lumens	6500 lumens	6500 lumens
	30min	1h30min	6h30min	16h	2000h	---	---	---
	398m	252m	155m	77m	5m	---	---	---
	39700cd	15900cd	6000cd	1500cd	8cd	---	---	---
	1m (Impact Resistant)							
	IP68, 2m (Submersible)							



iF Design Award 2018

China Good Design Award

CONCEPT 1

CREE XHP35 HD E2 LED
1×18650 Battery
2×CR123 Batteries

1800 Lumens



Two Modes



General Mode from Standby

Tap the side switch 3 times quickly to enter Turbo



Tactical Mode from Standby

Tap the side switch 3 times quickly to enter Strobe



GEM SERIES

GEM series is professionally designed for gemstones identification, featuring high output and great penetrability. An innovative rotary switch for infinite brightness levels. Multiple light sources optional, making the series perfect for gemstones, jewelries and treasures inspection.



Industrial workplace

NEW PRODUCT



GEM8 CREE XP-L HI V3 LED
1×18650 Battery
2×CR123 Batteries

500 Lumens

NEW PRODUCT



GEM8UV 365nm Ultraviolet Light
1×18650 Battery
2×CR123 Batteries

3000 mW

NEW PRODUCT



GEM10 CREE XP-L HI V3 LED
1×18650 Battery
2×CR123 Batteries

800 Lumens

NEW PRODUCT



GEM10UV 365nm Ultraviolet Light
1×18650 Battery
2×CR123 Batteries

3000 mW



HUNTING KITS

Designed for hunting and tactical applications, each NITECORE hunting kit consists of flashlight, charger, battery and other accessories, including weapon mount, filter, remote switch, lanyard and more, which may vary depending on the certain kit.



Hunting

ACCESSORIES LIST :

INCLUDED

- Flashlight
- 18650 Li-ion Battery
- Tactical Ring
- Weapon Mount (optional GM02/ GM03/ GM04)
- USB Cable
- RSW1 Remote Switch
- Holster
- Lanyard
- Filter * 2 (optional)



For more hunting kits, please visit www.nitecore.com



MH25GT HUNTING KIT



P30 HUNTING KIT



P16 TAC HUNTING KIT



MH40GT HUNTING KIT

CHARGER



NITECORE chargers are intelligent products that accommodate almost all types of rechargeable batteries, thus saving you the trouble of carrying several chargers. It's simple as insert, detect and charge. All the chargers can automatically identify battery types like Li-ion, Ni-MH, Ni-Cd and many other types of rechargeable batteries, applying appropriate charging modes of CC (Constant current), CV (Constant voltage) or -dV/dt.

CHARGER

Superb Charger Series: Up to 3A charging speed in a single slot



SC4

SC4 SPEC	
Input:	AC 100~240V 50/60Hz 1A(MAX) 40W DC 12V 3A
Output voltage:	Battery: 4.35V±1% / 4.2V±1% / 3.7V±1% / 1.48V±1% USB: 5V±5%
Output current:	3A*2(MAX) 1.5A*4 USB:2.1A(MAX)



SC2

SC2 SPEC	
Input:	AC 100~240V 50/60Hz 0.9A(MAX) 30W DC 12V 2.5A
Output voltage:	Battery: 4.35V±1% / 4.2V ±1% / 3.7V ±1% / 1.48V ±1% USB: 5V
Output current:	3A+2A MAX USB:2.1A

SC4 & SC2 COMPATIBLE WITH

Li-ion / IMR / LiFePO4 :
10340, 10350, 10440, 10500, 12340, 12500, 12650, 13450, 13500, 13650, 14350, 14430, 14500, 14650, 16500, 16340(RCR123), 16650, 17350, 17500, 17650, 17670, 18350, 18490, 18500, 18650, 18700, 20700, 21700, 22500, 22650, 25500, 26500, 26650
Ni-MH/Ni-Cd: AA, AAA, AAAA, C, D

CHARGER SERIES

Quick Charger Series: Up to 2A charging speed in a single slot

NEW PRODUCT

Q6

Q6 SPEC	
Input:	DC 12V 2000mA 24W
Output voltage:	4.2V±1%
Output current:	2A*2, 1A*4, 0.65A*6



Q2 & Q4 & Q6 COMPATIBLE WITH

Li-ion / IMR :
10340, 10350, 10440, 10500, 12340, 12500, 12650, 13450, 13500, 13650, 14350, 14430, 14500, 14650, 16500, 16340(RCR123), 16650, 17350, 17500, 17650, 17670, 17700, 18350, 18490, 18500, 18650, 18700, 22500, 22650, 25500, 26500, 26650, 26700, 20700, 21700, 22700



Q2

Multiple Colors Available



Q2 SPEC	
Input:	DC 12V 1000mA 12W
Output voltage:	4.2V±1%
Output current:	2A*1, 1A*2



Q4

Multiple Colors Available



Q4 SPEC	
Input:	DC 12V 2000mA 24W
Output voltage:	4.2V±1%
Output current:	2A*2, 1A*4

Digicharger Series: Digital LCD screen displays real-time data



D2

D2 SPEC	
Input:	AC 100-240V 50/60Hz 0.25A(MAX), DC 12V 1A
Output voltage:	4.2V ±1% / 3.7V ±1% / 1.48V ±1%
Output current:	500mA x 2



D4

D4 SPEC	
Input:	AC 100-240V 50/60Hz 0.35A(MAX), DC 12V 1A
Output voltage:	4.2V ±1% / 3.7V ±1% / 1.48V ±1%
Output current:	375mA x 4 / 750mA x 2

D2 & D4 COMPATIBLE WITH

Li-ion / IMR / LiFePO4 :
26650, 22650, 18650, 17670, 18490, 18350, 17500, 14500, 16340(RCR123), 10440
Ni-MH/Ni-Cd: AA, AAA, AAAA, C

UM Series: USB charging, with a HD LCD display



UM10

UM10 SPEC	
Input:	Micro USB DC 5V >500mA
Output voltage:	4.2V ±1% / 5V
Output current:	1000mA / 500mA



UM20

UM20 SPEC	
Input:	Micro USB DC 5V >500mA
Output voltage:	4.2V ±1% / 5V
Output current:	1000mA / 500mA

UM10 & UM20 COMPATIBLE WITH

Li-ion / IMR: 18650, 18490, 18350, 17670, 17500, 16340(RCR123), 14500, 10440

NITECORE®

LC10

LC10 SPEC

Input:	DC 5V ≥0.5A
Output voltage:	Battery: 4.2V±1% USB: 5V±5%
Output current:	1A MAX

LC10 COMPATIBLE WITH

Li-ion/IMR:
12650, 13450, 13500, 13650, 14350, 14430, 14500, 14650, 16500, 16340(RCR123), 16650, 17350, 17500, 17650, 17670, 17700, 18350, 18490, 18500, 18650, 18700, 20700, 21700, 22500, 22650, 22700, 25500, 26500, 26650, 26700 (Compatible with 3.6V or 3.7V cylinder rechargeable Li-ion battery)

- ◆ Charge/Discharge Functions
- ◆ Emergency Backup Light
- ◆ Lightweight and Portable

The LC10 is a lightweight and portable magnetic USB charger with charging, discharging and lighting functions. It is compatible with almost all kinds of cylinder Li-ion batteries, which can charge devices with 2.0 USB and iOS devices via the charging port. It is ideal for charging the batteries anywhere anytime with the portable USB plug.



NEW PRODUCT

NOTE: Battery is not included.



MAGNETIC

NFF01 SPEC

Input:	DC 12V 3000mA MAX
Motor:	70-1200 rpm
Motor output:	3W
Heat output:	30W
Control precision:	5°C / 10°F
Operating duration:	SMM: continuous PMM: 14 days

- ◆ Programmable
- ◆ Heating safely
- ◆ Clear user interface
- ◆ Simple operation



NFF01

E-liquid Mixer

NFF01 MIXER is a magnetic liquid mixer specially designed for DIY vapers. It is the world's first product to apply the magnetic stirring technology in vaping industry. A simple mixing mode and a programmable mixing are optional so that the R.P.M. (Revolutions Per Minute) and temperature can be selected by users. The onboard screen displays R.P.M., time, temperature and mode.

NEW PRODUCT



VCL10

VCL10 SPEC

Input:	DC 12V-18V 2.5A(MAX)
Output:	DC 5V/2.4A
Quik Charge 3.0:	DC 3.6V-12V/2.4A
Quik Charge 2.0:	DC 5V/2.4A 9V/2.4A 12V/2.4A

V Series: In-car Speedy Battery Charger

V2

V2 SPEC

Input:	DC 12V 42W(MAX)
Output:	Battery: 4.2V±1%/3A*2(MAX) 1.48V±1%/2A*2 (MAX) USB: 5V±5% 1A*2/2.1A*1 (MAX)

V2 COMPATIBLE WITH

Li-ion/IMR:
14500, 14650, 16500, 16340(RCR123), 16650, 17350, 17500, 17650, 17670, 18350, 18490, 18500, 18650, 22500, 22650, 25500, 26500, 26650, 26700
Unprotected batteries: 17700, 18700, 20700, 21700, 22700, 26700
Ni-MH(NiCd): AA, C



Intelligent Charger Series: Onboard Intelligent Charging System



i8

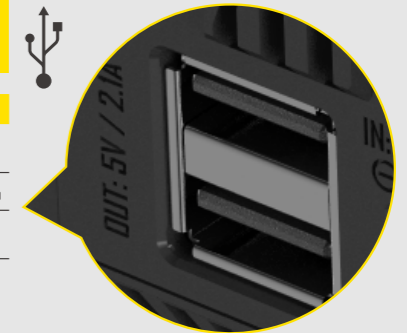
i8 SPEC

Input:	AC 100~240V 50/60Hz 0.6A(MAX) 30W DC 12V 3A
Output voltage:	Battery: 4.2V±1% / 1.48±1%/USB: 5V±5%
Output current:	1.5Ax2, 1Ax4, 0.75Ax4, 0.5Ax8 USB: 5V*2.1A

i8 COMPATIBLE WITH

Li-ion / IMR:
10340, 10350, 10440, 10500, 12340, 12500, 12650, 13450, 13500, 13650, 14350, 14430, 14500, 14650, 16500, 16340(RCR123), 16650, 17350, 17500, 17650, 17670, 18350, 18490, 18500, 18650, 22500, 22650, 25500, 26500, 26650
Ni-MH/Ni-Cd: AA, AAA, C, D

Compatible with USB Devices



NEW i2

NEW i2 SPEC

Input:	AC 100~240V 50/60Hz 0.25A(MAX) 8W DC 9~12V
Output voltage:	4.35V ±1% / 4.2V±1% 3.7V ±1% / 1.48V ±1%
Output current:	500mA×2 / 1000mA ×1

NEW i2 & NEW i4 COMPATIBLE WITH

Li-ion / IMR / LiFePO4:
10340, 10350, 10440, 10500, 12340, 12500, 12650, 13450, 13500, 13650, 14350, 14430, 14500, 14650, 16500, 16340(RCR123), 16650, 17350, 17500, 17650, 17670, 18350, 18490, 18500, 18650, 18700, 20700, 21700, 22500, 22650, 25500, 26500, 26650
Ni-MH/Ni-Cd:
AA, AAA, AAAA, C, D



NEW i4

NEW i4 SPEC

Input:	AC 100~240V 50/60Hz 0.25A(MAX) 10W; DC 9~12V 1A
Output voltage:	4.35V±1%/4.2V±1% / 3.7V±1%/1.48V±1%
Output current:	1.5A×1 / 0.75A×2 / 0.5A×2 / 0.375A×4



Flexible Power Bank Series: Up to 1A fast charging through Micro-USB input port

F1

F1 SPEC

Input:	DC 5V, ≥500mA
Output voltage:	4.2V±1% (Battery) / 5V±5% (USB)
Output current:	Battery: 1A MAX USB: 1A

F1 & F2 COMPATIBLE WITH

Li-ion / IMR:
26650, 18650, 17670, 18490, 17500, 17335, 16340(RCR123), 14500, 10440



F2

F2 SPEC

Input:	DC 5V, ≥0.5A
Output voltage:	4.2V±1% (Battery) / 5V±5% (USB)
Output current:	Battery: 2×1A MAX USB: 2A MAX



NOTE: Battery is not included.

OUTDOOR POWER SOLUTION

NITECORE USB travel chargers designed specifically for Leica, Canon, Nikon, SONY, FUJIFILM and GoPro cameras. They all feature state of the art technologies and designs which make them some of the most sought-after products for enthusiastic photographers.

USN1 USB dual slot travel charger for Sony camera



2 BATTERY SLOTS

SONY NP-FW50

USN1 SPEC		
Input:	DC 5V/2A	
Output voltage:	Slot 1 8.4V±1%	Slot 2 8.4V±1%
Output current:	1A	



NP-FW50

Compatible With:

Sony a5000	Sony a6300	Sony a7 II	Sony a7S
Sony a5100	Sony a6500	Sony a7R	Sony a7S II
Sony a6000	Sony a7	Sony a7R II	Sony DSC-RX10 III

CHARGER SERIES



- Battery Status
- Charged Volume
- Charging Temperature
- Battery Level

BATTERY HEALTH DETECTION



NEW PRODUCT

USN2 USB Charger for SONY

SONY is a registered trademark of Sony Corporation.



SONY NP-BX1

USN2 SPEC		
Input voltage:	DC 5V/2A	
Output voltage:	Slot 1 4.2V±1%	Slot 2 4.2V±1%
Output current:	600mA*2 (MAX)	

2 BATTERY SLOTS

NP-BX1

Compatible With:

DSC-HX350	DSC-WX350	DSC-HX300	HDR-MV1
DSC-H400	DSC-HX60	HDR-A300R	HDR-GWP88E
DSC-HX400	DSC-RX100	FDR-X3000	HDR-CX240E
DSC-RX100M5	DSC-RX100M2	HDR-AS50	HDR-PJ240E
DSC-RX1RM2	DSC-RX100M3	HDR-AS200V	
DSC-RX100M4	DSC-RX1	FDR-X1000V	
DSC-WX500	DSC-RX1R	HDR-CX405	
DSC-HX90	DSC-HX50	HDR-PJ410	



UCN1 USB Charger for Canon

CANON is a registered trademark of Canon, INC.

Canon LP-E6/LP-E6N/LP-E8

UCN1 SPEC		
Input voltage:	DC 5V/2A	
Output voltage:	Slot 1 (LP-E6/LP-E6N) 8.4V±1%	Slot 2 (LP-E8) 8.4V±1%
Output current:	1A	

2 BATTERY SLOTS

LP-E6/LP-E6N

Compatible With:

Canon EOS 5D Mark II	Canon EOS 5DS	Canon EOS 7D	Canon EOS 60Da
Canon EOS 5D Mark III	Canon EOS 5DS R	Canon EOS 7D Mark II	Canon EOS 70D
Canon EOS 5D Mark IV	Canon EOS 6D	Canon EOS 60D	Canon XC10

LP-E8

Compatible With:

Canon EOS Rebel T2i	Canon EOS Rebel T5i	Canon EOS 650D	Canon EOS Kiss X5
Canon EOS Rebel T3i	Canon EOS 550D	Canon EOS 700D	Canon EOS Kiss X6
Canon EOS Rebel T4i	Canon EOS 600D	Canon EOS Kiss X4	

UNK1 USB Charger for Nikon

Nikon is a registered trademark of Nikon, INC.



Nikon EN-EL14/ EN-EL14a/ EN-EL15

UNK1 SPEC		
Input voltage:	DC 5V/2A	
Output voltage:	Slot 1 (EN-EL15) 8.4V±1%	Slot 2 (EN-EL14/ EN-EL14a) 8.4V±1%
Output current:	1A	

2 BATTERY SLOTS

EN-EL15

Compatible With:

Nikon D600	Nikon D800	Nikon D810A	Nikon D7200
Nikon D610	Nikon D800E	Nikon D7000	Nikon 1 V1
Nikon D750	Nikon D810	Nikon D7100	Nikon V1

EN-EL14/EN-EL14a

Compatible With:

Nikon D5500	Nikon D3100	Nikon Coolpix P7100	Nikon D5600
Nikon D5300	Nikon D3200	Nikon Coolpix P7000	Nikon D3400
Nikon D5200	Nikon D3300	Nikon Coolpix P7700	
Nikon D5100	Nikon Df	Nikon Coolpix P7800	



UNK2 USB Charger for Nikon

Nikon is a registered trademark of Nikon, INC.

Nikon EN-EL15

UNK2 SPEC		
Input voltage:	DC 5V/2A	
Output voltage:	Slot 1 8.4V±1%	Slot 2 8.4V±1%
Output current:	1A	

2 BATTERY SLOTS

EN-EL15

Compatible With:

Nikon D500	Nikon D800	Nikon D850	Nikon D7500
Nikon D600	Nikon D800E	Nikon D7000	Nikon 1 V1
Nikon D610	Nikon D810	Nikon D7100	Nikon V1
Nikon D750	Nikon D810A	Nikon D7200	

NITECORE®

NEW PRODUCT



FX1

USB Charger for FUJIFILM

FUJIFILM is a registered trademark of Fujifilm Holdings Corporation.

FUJIFILM NP-WI26/NP-WI26S

FX1 SPEC

Input voltage:	DC 5V/2A	
Output voltage:	Slot 1 8.4V±1%	Slot 2 8.4V±1%
Output current:	1A	

2 BATTERY SLOTS

NP-WI26/NP-WI26S

Compatible With:

X-Pro1	X-A3	X-E1	X-H1	X-T10
X-Pro2	X-A5	X-E2	X-M1	X-T20
X-A1	X-A10	X-E3	X-T1	X100F
X-A2	X-A20	X-E2S	X-T2	HS30



NEW PRODUCT

UL109

USB Charger for Leica

Leica is a registered trademark of Leica Microsystems IR GmbH

LEICA BP-DC15-E

UL109 SPEC

Input voltage:	DC 5V/2A	
Output voltage:	Slot 1 8.4V±1%	Slot 2 8.4V±1%
Output current:	1A	

2 BATTERY SLOTS

BP-DC15-E

Compatible With:

D-lux typ109



ULSL

Leica BP-SCL4

ULSL SPEC

Input:	DC 5V/2A
Output voltage:	8.4V±1%
Output current:	1A

BP-SCL4

Compatible With:

Leica SL Typ601



ULM240

Leica BP-SCL2

ULM240 SPEC

Input:	DC 5V/2A
Output voltage:	8.2V±1%
Output current:	1A

BP-SCL2

Compatible With:

Leica M(Typ262) Leica M(Typ240)
Leica M(Typ246) Leica M-P
Leica M240P



ULQ

Leica BP-DC12

ULQ SPEC

Input:	DC 5V/2A
Output voltage:	8.4V±1%
Output current:	1A

BP-DC12

Compatible With:

Leica Q(Typ116) Leica V-Lux 4
Leica V-Lux(Typ114)



ULM9

Leica BLI-312

ULM9 SPEC

Input:	DC 5V/1A
Output voltage:	4.2V±1%
Output current:	1A

BLI-312

Compatible With:

Leica BM8 Leica M8.2 Leica M9-P
Leica M8 Leica M9 Leica M-E

GP SERIES



Photography



Outdoor



EDC

NITECORE®



USB CHARGING

ACTION CAMERA LIGHT

GP3

CREE XP-G2 LED

1×NLGP3 battery (1180mAh)
1×GoPro AHDBT-302 battery

360 Lumens



UGP SERIES



Outdoor

INTELLIGENT USB CHARGER FOR GoPro HERO 6/5/4/3/3+ BATTERIES



UGP5

2 BATTERY SLOTS

BATTERY : GoPro HERO 5/6 BLACK BATTERY
COMPATIBLE WITH : GoPro HERO 5/6 BLACK

UGP5 SPEC

Input:	USB DC 5V >500mA
Output voltage:	4.35V ±1%
Output current:	750mA*2 MAX



UGP4

2 BATTERY SLOTS

BATTERY : AHDBT-401 / 301 / 201
COMPATIBLE WITH : GoPro HERO 3/4

UGP4 SPEC

Input:	USB DC 5V > 1A
Output voltage:	4.2V±1%/4.35V±1%/ 5V
Output current:	800mA x 2 , USB 1500mA x 1

NOTE: Battery is not included.

CHARGER SERIES

ACCESSORY

NITECORE®



NITECORE BATTERIES

NITECORE Batteries are compatible with various types of electronic products, featuring high capacity, high performance, safety and reliability. With protected circuits, all batteries have multiple protections to prevent overcharge, over-discharge, short circuit and overheat. Insured worldwide by Ping An Insurance(Group) Company of China, Ltd.

Primary Li-ion Batteries

Primary Li-ion batteries feature higher energy intensity, better power storage and longer runtime compared to other batteries, and environmental-friendly that can be recharged for over 500 times.



MODEL	SPECIFICATION	CAPACITY
NL1823	18650	2300mAh
NL1826	18650	2600mAh
NL1832	18650	3200mAh
NL1834	18650	3400mAh
NL1835	18650	3500mAh
NL166	16340	650mAh
NL1475	14500	750mAh
NL1485	14500	850mAh

High Performance Batteries

Specially designed for high performance products, featuring high drain and excellent performance, resistant to extreme conditions, capable of driving high performance products to the ultimate performance.



MODEL	SPECIFICATION	CAPACITY	DISCHARGE CURRENT
NL1835HP	18650	3500mAh	8A
NL1829LTHP	18650	2900mAh	8A
IMR18650 3100mAh(Far TM28)	18650	3100mAh	10A

Micro-USB Rechargeable Li-ion Batteries

With a built-in Micro-USB port, it is convenient to charge the rechargeable Li-ion batteries via a USB cable.



MODEL	SPECIFICATION	CAPACITY
NL1826R	18650	2600mAh
NL1829R	18650	2900mAh
NL1834R	18650	3400mAh
NL1835R	18650	3500mAh
NL1665R	16340	650mAh
NL1475R	14500	750mAh
NL1829RLTP	18650	2900mAh

Low-temperature Resistant Batteries

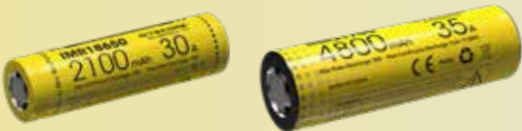
Specially designed for freezing environment like high altitude area or severe cold area, it is low temperature resistant even at the lowest of -40°C .



MODEL	SPECIFICATION	CAPACITY	DISCHARGE CURRENT
NL1829LTP	18650	2900mAh	4A
NL1829LTHP	18650	2900mAh	8A
NL1829RLTP	18650	2900mAh	5A

IMR Batteries

Specially designed for vaping industry, featuring high performance and high drain, IMR batteries can be charged by multiple NITECORE chargers.



MODEL	SPECIFICATION	CAPACITY	PULSE DISCHARGE CURRENT
2100mAh 30A	18650	2100mAh	30A
2100mAh 38A	18650	2100mAh	38A
2500mAh 35A	18650	2500mAh	35A
2600mAh 40A	18650	2600mAh	40A
3100mAh 35A	18650	3100mAh	35A
4800mAh 35A	21700	4800mAh	35A

Gun Mount

With HAIII military grade hard-anodized finish, gun mounts are suit for tactical flashlights with head diameter from 0.7" to 1.1" (18mm-28mm), used to fix tactical flashlights to the gun.

Model: GM02/GM02M fits flashlights with diameter of 1" (25.4mm)
GM03 fits flashlights with diameter of 0.7" - 1.1" (18mm-28mm)
GM04 fits flashlights with diameter of 0.7" - 0.98" (18mm-25mm)



Bicycle Mount (BM02)

NITECORE Bicycle Mount fits any flashlight with 1" body diameter, providing quick and easy mounting without any tools, tightly fit different sizes of handlebars.



Helmet Clip (NHC10)

A helmet clip allows for mounting a headlamp on a thin-edged helmet that does not include headlamp clips.



Tactical Remote Switch

Noiseless pressure pad switch capable of accessing momentary-on and constant-on illumination, professional and convenient operation making it ideal for law enforcement, hunting and more scenarios.

Model:RSW1 fits flashlights with diameter of 1 inch, capable of accessing momentary-on and constant-on illumination;
RSW2 fits P20, P20UV, P10GT, P05, P05 PINK and R25, capable of changing brightness levels.



Tactical Tail Cap (NTC1)

Specially designed for law enforcement, NTC1 is constructed from aero grade aluminum alloy with HAIII military grade hard-anodized finish, providing momentary-on and constant-on illumination in emergency.



Tactical Lanyard (NTL10/NTL20)

Compatible with various types of flashlights, the lanyard enables lighting tools to be hung, suspended or fastened to other objects, thus preventing flashlights from falling or missing.



Tactical Holster (NTH30B for P20 & P20UV)

Specially designed for law enforcement, it can be used with tactical lanyard NTL10 or NTL20 to keep your hands free and offer tactical operation rapidly.It is 360° adjustable and equipped with a battery case.



Handle Mount (NHM10)

Specially designed for TM Series. Treated with HAIII military grade hard-anodized finish, it is impact and crush resistant, making the flashlight easy to carry.



Window Breaker (NWB10)

Constructed from stainless steel, it can serve as a window breaker or an escape tool in emergency. It is easy to mount and dismount.



Silicone Grease (SG7)

Silicone Grease is used for lubricating the threads of flashlights.



Crenulated Bezel

Stainless steel bezel features hardness, low friction and reliability, which improves tactical function of flashlights, ideal for law enforcement, tactical and rescuing applications.

Model:40mm crenulated bezel, 40mm PVD bezel



Traffic Wand

Made from PC material that features crush, wear and high temperature resistance, traffic wand can turn flashlights into an orange traffic wand for traffic control, road guide and distress signal.

Model:NTW25, NTW32, NTW34, NTW40



Diffuser

Constructed from ABS materials, diffuser can convert flashlight output into a soft, white and diffused flood beam, great for comfortable reading, camping and more.

Model:NDF25, NDF32, NDF34, NDF40



Filters

Utilized a toughened ultra-clear glass lens with anti-reflective coating that provides impact resistance and maximum light penetrability. Flashlights equipped with the red/green/blue filters to deliver soft red/green/blue light, suitable for short range reading.



MODEL	COMPATIBLE SIZE	COLOR
NFR23/NFG23/NFB23	22.5mm	RGB
NFR25/NFG25/NFB25	25.4mm	RGB
NFR34/NFG34/NFB34	34mm	RGB
NFR40/NFG40/NFB40	40mm	RGB
NFR50/NFG50	50mm	RGB
NFR60/NFG60/NFB60	60mm	RGB
NFD23	22.5mm	White
NFD25	25.4mm	White
NFD34	34mm	White
NFD40	40mm	White
NFD60	60mm	White



NITECORE®

Titanium Alloy Collection

Titanium Tactical Pen (NTP20)

As a multi-purposed titanium tactical pen with the German Schneider Gelion 39 refill, the NTP20 is not only an exquisite writing instrument, but it's also designed to be used in tactical situations and life-threatening situations. The tungsten steel tip serves as a glass breaker to smash windows or an effective tool in close-combat.

NEW PRODUCT



Self-defense | Emergency Escape | Close-quarter Combat | Daily Writing

Titanium Tactical Pen (NTP10)

Constructed from titanium ally, with Fisher Space Pen pressurized refill for smooth writing, oil tight and non-volatile. Tungsten steel tapered tip makes it so rugged that can double as a window breaker or a self-defense tool.



Emergency Whistle

The NWS10/20 is constructed from a single piece of TC4 titanium alloy, thus it is compact and lightweight, with sound intensity up to 120 decibels. Perfect for everyday carry.

Model:NWS10, NWS20





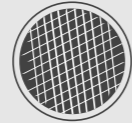
NEW PRODUCT

Winner of Small Backpacks of TACTICAL GEAR Magazin



BP20

Multi-purpose Backpack



Ventilated back enhances air circulation and lightens the burden

NEW PRODUCT

NEB10/NEB20

Excursion Bag



NEB10



NEB20



NEW PRODUCT

NTC10

Tactical Case



Reinforced handheld grip

Hypalon Synthetic Rubber

Hard-Use Military-Spec 1050D Nylon



NDP10



NDP20



NUP10



NUP20



NHLO2S



NHLO2



NHLO3



NHLO4



NHLO1



Tactical Holster

NCP30 tactical holster is lightweight and durable, with convenient hook and loop fastener and modular design that enables fast mounting on MOLLE systems.

Model: NCP40, NCP30



NCP40 Holster



NCP30 Holster



Headband

Strengthened sewing design provides secure fit for headlamp, a hidden silicone gripper prevents slip by sweat.

Model: HB02, HB03



MODEL	LED	OUTPUT / RUNTIME					BEAM DIAMETER	BEAM INTENSITY	
		TURBO	HIGH	MID	LOW	LOWER			
Tiny Monster Series	TM38	CREE XHP35 HI D4	1800LUMENS	800LUMENS	400LUMENS	200LUMENS	50LUMENS	1400m	490000cd
			*4 h	11h	22h	40h	120h		
	TM38 Lite	CREE XHP35 HI D4	1800LUMENS	800LUMENS	400LUMENS	200LUMENS	50LUMENS	1400m	490000cd
			*2h	5h30min	11h	20h	60h		
	TM28	4 CREE XHP35 HI LEDs	6000LUMENS	2300LUMENS	1000LUMENS	320LUMENS	2LUMENS	655m	107200cd
			*45min	*2h	4h30min	11h15min	1000h		
	TM26GT	4 CREE XP-L HI V3 LEDs	3500LUMENS	1700LUMENS	540LUMENS	95LUMENS	3LUMENS	704m	124000cd
			1h15min	3h15min	9h45min	48h	1000h		
TM06S	4 CREE XM-L2 U3 LEDs	4000LUMENS	1500LUMENS	480LUMENS	160LUMENS	3LUMENS	359m	32300cd	
		1h	4h	11h15min	32h	560h			
TM03	CREE XHP70	2800LUMENS	1350LUMENS	550LUMENS	40LUMENS	—	289m	21000cd	
		15min	45min	2h15min	30h	—			
TM03 CRI	CREE XHP70, CRI ≥ 80	2600LUMENS	1350LUMENS	550LUMENS	40LUMENS	—	289m	21000cd	
		15min	45min	2h15min	30h	—			
TM16GT	4 CREE XP-L HI V3 LEDs	3600LUMENS	1500LUMENS	500LUMENS	210LUMENS	5LUMENS	1003m	252000cd	
		1h	3h15min	7h15min	21h	610h			
Precise Series	P05	CREE XM-L2 U2	—	460LUMENS	170LUMENS	60LUMENS	—	150m	5650cd
			—	*30min	1h	1h45min	—		
	P05 PINK	CREE XM-L2 U2	—	460LUMENS	170LUMENS	60LUMENS	—	150m	5650cd
			—	*30min	1h	1h45min	—		
	P10GT	CREE XP-L HI V3	—	HIGH (M1/M2/M3)	MID (M3)	LOW (M2)	LOW (M3)	286m	20500cd
			—	900LUMENS	300LUMENS	190LUMENS	60LUMENS		
	P12	CREE XM-L2 U2	—	1000LUMENS	240LUMENS	70LUMENS	1LUMEN	232m	13500cd
			—	1h15min	6h	28h	520h		
	P12GT	CREE XP-L HI V3	—	1000LUMENS	280LUMENS	55LUMENS	1LUMEN	320m	25700cd
			—	1h	5h15min	28h	520h		
	P15	CREE XP-G2 R4	—	430LUMENS	150LUMENS	35LUMENS	1LUMEN	278m	19321cd
			—	2h15min	8h15min	37h	520h		
	P16 TAC	CREE XM-L2 U3	1000LUMENS	240LUMENS	60LUMENS	1LUMEN	—	300m	22000cd
			*1h15min	7h	33h	600h	—		
P20	CREE XM-L2 U2	—	800LUMENS	400LUMENS	70LUMENS	—	210m	11100cd	
		—	1h30min	2h30min	10h30min	—			
P20UV	CREE XM-L2 U2	—	800LUMENS	400LUMENS	80LUMENS	—	180m	8100cd	
		—	1h30min	2h30min	8h	—			
P30	CREE XP-L HI V3	1000LUMENS	400LUMENS	220LUMENS	70LUMENS	1LUMEN	618m	95500cd	
		*1h	3h	5h	17h	680h			
P36	CREE MT-G2	2000LUMENS	1500LUMENS	380LUMENS	2LUMENS	—	300m	22300cd	
		45min	1h	7h30min	325h	—			
P26	CREE XP-L HI V3	1000LUMENS	—	—	—	0.5LUMENS	310m	24000cd	
		1h	—	—	—	500h			
SRT3	CREE XM-L2 U2	550LUMENS	—	—	—	0.1LUMENS	134m	4500cd	
		45min	—	—	—	150h			
SRT7GT	CREE XP-L HI V3	1000LUMENS	—	—	—	0.1LUMENS	450m	50900cd	
		1h15min	—	—	—	240h			

NOTE: Runtime has been measured with the first battery type stated in battery options.
 * The runtime for Turbo/High mode is the testing result before starting temperature regulation.

WATER-PROOF	BATTERY OPTIONS	DIMENSIONS			WEIGHT	MODEL
		LENGTH	HEAD DIAMETER	TUBE DIAMETER		
IPX8	NBP68 HD	278mm (10.94")	90mm (3.54")	50mm (1.97")	1260.3g (44.46oz)	TM38
IPX8	4x18650	195mm (7.68")	90mm (3.54")	50mm (1.97")	780g (27.51oz)	TM38 Lite
IPX8	4x IMR18650 / 4x18650 / NBP68 HD	142mm (5.59")	2.24"x2.24" (57mmx57mm) (Height/Width)	50mm (1.97")	414g (14.6oz)	TM28
IPX8	4x18650 / 8xCR123	142mm (5.59")	2.24"x2.24" (57mmx57mm) (Height/Width)	50mm (1.97")	442g (15.50oz)	TM26GT
IPX8	4x18650	117mm (4.74")	50mm (1.97")	50mm (1.97")	266g (9.39oz)	TM06S
IPX8	NI18650D battery (for TM03 only)	159mm (6.26")	40mm (1.57")	30mm (1.18")	213g (7.51oz)	TM03
IPX8	NI18650D battery (for TM03 only)	159mm (6.26")	40mm (1.57")	30mm (1.18")	213g (7.51oz)	TM03 CRI
IPX8	4x18650	182mm (7.17")	89mm (3.5")	53mm (2.09")	521g (18.38oz)	TM16GT
IPX8	RCR123 / CR123	101mm (3.97")	25.4mm (1")	25.4mm (1")	60.5g (2.13oz)	P05
IPX8	RCR123 / CR123	101mm (3.97")	25.4mm (1")	25.4mm (1")	60.5g (2.13oz)	P05 PINK
IPX8	2xCR123 / 1x18650	135mm (5.3")	25.4mm (1")	25.4mm (1")	82g (2.89oz)	P10GT
IPX8	1x18650 / 2xCR123	139mm (5.47")	25.4mm (1")	25.4mm (1")	88g (3.1oz)	P12
IPX8	1x18650 / 2xCR123	140mm (5.51")	25.4mm (1")	25.4mm (1")	91g (3.21oz)	P12GT
IPX8	1x18650 / 2xCR123	151mm (5.94")	40mm (1.57")	25.4mm (1")	132g (4.66oz)	P15
IPX8	1x18650 / 2xCR123	151mm (5.94")	40mm (1.57")	25.4mm (1")	141g (4.97oz)	P16 TAC
IPX8	2xCR123 / 1x18650	134mm (5.28")	31.8mm (1.25")	25.4mm (1")	101g (3.56oz)	P20
IPX8	2xCR123 / 1x18650	134mm (5.28")	31.8mm (1.25")	25.4mm (1")	104g (3.67oz)	P20UV
IPX8	1x18650 / 2xCR123	141.5mm (5.57")	50mm (1.97")	25.4mm (1")	165g (5.83oz)	P30
IPX8	2x18650 / 4xCR123	173mm (6.81")	50mm (1.97")	28mmx42mm (1.1"x1.65")	252g (8.89oz)	P36
IPX8	1x18650 / 2xCR123	149mm(5.87")	31.8mm (1.25")	25.4mm (1")	128.5g(4.53oz)	P26
IPX8	1xRCR123 / 1x CR123 / 1xAA	100mm (3.9") 117mm (4.6") (with a body extender)	25.4mm (1")	24.3mm (0.96")	73g (2.57oz) / 87g (3.07oz) (with a body extender)	SRT3
IPX8	1x18650 / 2xCR123	158mm (6.22")	40mm (1.57")	25.4mm (1")	173g (6.1oz)	SRT7GT

Smart Ring Tactical Series

Smart Ring Tactical Series

MODEL	LED	OUTPUT / RUNTIME					BEAM DIAMETER	BEAM INTENSITY	
		TURBO	HIGH	MID	LOW	LOWER			
SRT Series	SRT9	CREE XHP50	2150LUMENS	—	—	—	0.1LUMENS	246m	15100cd
			*1h	—	—	—	250h		
Chameleon Series	CR6	CREE XP-E R2	440LUMENS	280LUMENS	160LUMENS	25LUMENS	1LUMEN	190m	9000cd
			1h45min	3h30min	7h	43h	400h		
	CG6	CREE XP-E G2	440LUMENS	280LUMENS	160LUMENS	25LUMENS	1LUMEN	190m	9000cd
			1h45min	3h30min	7h	43h	400h		
	CB6	CREE XP-E D4	440LUMENS	280LUMENS	160LUMENS	25LUMENS	1LUMEN	190m	9000cd
			1h45min	3h30min	7h	43h	400h		
Cl6	CREE XP-G2 R5	440LUMENS	280LUMENS	160LUMENS	25LUMENS	1LUMEN	190m	9000cd	
		1h45min	3h30min	7h	43h	400h			
CU6	CREE XP-G2 R5	440LUMENS	280LUMENS	160LUMENS	25LUMENS	1LUMEN	190m	9000cd	
		1h45min	3h30min	7h	43h	400h			
Rechargeable Series	R25	CREE XP-L HI V3	—	HIGH (M1/M2/M3)	MID (M3)	MID (M2)	LOW (M3)	321m	25800cd
			—	800LUMENS	230LUMENS	120LUMENS	50LUMENS		
			—	1h	9h	12h	15h		
R40	CREE XP-L HI V3	1000LUMENS	420LUMENS	200LUMENS	50LUMENS	1LUMEN	520m	67700cd	
		*1h30min	4h30min	10h30min	32h	1000h			
Multitask Hybrid Series	MH10	CREE XM-L2 U2	—	1000LUMENS	240LUMENS	70LUMENS	1LUMEN	232m	13500cd
			—	1h15min	6h	28h	520h		
	MH12GT	CREE XP-L HI V3	—	1000LUMENS	280LUMENS	55LUMENS	1LUMEN	320m	25700cd
			—	*1h15min	6h	28h	520h		
	MH20	CREE XM-L2 U2	1000LUMENS	410LUMENS	230LUMENS	50LUMENS	1LUMEN	220m	12500cd
			2h	2h45min	5h45min	15h45min	235h		
	MH20GT	CREE XP-L HI V3	1000LUMENS	410LUMENS	230LUMENS	50LUMENS	1LUMEN	362m	33000cd
			1h	3h	6h45min	22h	680h		
	MH23	CREE XHP35 HD	1800LUMENS	760LUMENS	260LUMENS	55LUMENS	1LUMEN	294m	21600cd
			*30min	1h45min	4h45min	19h	300h		
MH27	CREE XP-L HI V3	1000LUMENS	250LUMENS	55LUMENS	1LUMEN	—	462m	53500cd	
		1h	6h15min	28h	708h	—			
MH27 UV	CREE XP-L HI V3	1000LUMENS	250LUMENS	55LUMENS	1LUMEN	—	462m	53500cd	
		1h	6h15min	28h	708h	—			
MH40GT	CREE XP-L HI V3	1000LUMENS	325LUMENS	88LUMENS	13LUMENS	—	803m	161300cd	
		2h15min	6h45min	27h	130h	—			
MH41	CREE XHP50	2150LUMENS	1230LUMENS	580LUMENS	90LUMENS	1LUMEN	495m	61400cd	
		1h	2h30min	5h45min	32h15min	850h			
MH25GT	CREE XP-L HI V3	1000LUMENS	300LUMENS	110LUMENS	50LUMENS	—	452m	51100cd	
		1h	4h	10h45min	36h	—			
Multi-Task Series	MT1U	UV	—	—	—	—	—	—	—
			—	—	—	—	—		
	MT20C	CREE XP-G2 R5	460LUMENS	210LUMENS	100LUMENS	20LUMENS	1LUMEN	180m	8300cd
			1h45min	4h45min	12h	60h	480h		
MT06MD	Nichia 219B	—	180LUMENS	45LUMENS	4LUMENS	—	58m	860cd	
		—	45min	5h15min	35h	—			
MT1A	CREE XP-G2 R5	180LUMENS	55LUMENS	22LUMENS	5LUMENS	—	115m	3350cd	
		1h30min	5h30min	18h	60h	—			

WATERPROOF	BATTERY OPTIONS	DIMENSIONS			WEIGHT	MODEL
		LENGTH	HEAD DIAMETER	TUBE DIAMETER		
IPX8	2x18650 / 4xCR123	148mm (5.83")	40mm (1.57")	40mmx34.9mm (1.57"x1.37")	224.3g (7.91oz)	SRT9
IPX8	1x18650 / 2xCR123	143mm (5.63")	40mm (1.57")	25.4mm (1")	138g (4.87oz)	CR6
IPX8	1x18650 / 2xCR123	143mm (5.63")	40mm (1.57")	25.4mm (1")	138g (4.87oz)	CG6
IPX8	1x18650 / 2xCR123	143mm (5.63")	40mm (1.57")	25.4mm (1")	138g (4.87oz)	CB6
IPX8	1x18650 / 2xCR123	143mm (5.63")	40mm (1.57")	25.4mm (1")	138g (4.87oz)	Cl6
IPX8	1x18650 / 2xCR123	143mm (5.63")	40mm (1.57")	25.4mm (1")	138g (4.87oz)	CU6
IPX8	1x18650 / 2xCR123	141mm (5.55")	31.8mm (1.25")	25.4mm (1")	108.1g (3.81oz)	R25
IPX8	1x26650	151.3mm (5.95")	40mm (1.57")	38.6mm (1.55")	194.5g (6.86oz)	R40
IPX8	1x18650 / 2xCR123	130mm (5.12")	25.4mm (1")	25.4mm (1")	75g (2.65oz)	MH10
IPX8	1x18650 / 2xCR123	139.2mm (5.48")	25.4mm (1")	25.4mm (1")	87g (3.07oz)	MH12GT
IPX8	1x18650 / 2xCR123	105mm (4.13")	31.8mm (1.25")	25.4mm (1")	87.3g (3.08oz)	MH20
IPX8	1x18650 / 2xCR123	111mm (4.37")	31.8mm (1.25")	25.4mm (1")	88.8g (3.13oz)	MH20GT
IPX8	1xIMR18650 / 1x18650 / 2xCR123	111.3mm (4.38")	31.8mm (1.25")	25.4mm (1")	96.2g (3.39oz)	MH23
IPX8	1x18650 / 2xCR123	154mm (6.06")	40mm (1.57")	25.4mm (1")	170g (6oz)	MH27
IPX8	1x18650 / 2xCR123	154mm (6.06")	40mm (1.57")	25.4mm (1")	170g (6oz)	MH27 UV
IPX8	2x18650 / 4xCR123	250mm (9.84")	60mm (2.36")	25.4mm (1")	302g (10.65oz)	MH40GT
IPX8	2x18650 / 4xCR123	250mm (9.84")	60mm (2.36")	25.4mm (1")	321g (11.32oz)	MH41
IPX8	1x18650 / 2xCR123	160mm (6.3")	40mm (1.57")	25.4mm (1")	143g (5oz)	MH25GT
IPX8	1x18650 / 2xCR123	124mm (4.88")	25.4mm (1")	25.4mm (1")	75g (2.65oz)	MT1U
IPX8	1x18650 / 2xCR123	124.7mm (4.91")	25.4mm (1")	25.4mm (1")	72.3g (2.55oz)	MT20C
IPX8	2xAAA	128mm (5.04")	14mm (0.55")	14mm (0.55")	22g (0.78oz)	MT06MD
IPX8	1xAA	105mm (4.13")	22.56mm (0.89")	21.5mm (0.85")	55g (1.94oz)	MT1A

NOTE: Runtime has been measured with the first battery type stated in battery options.
* The runtime for Turbo/High mode is the testing result before starting temperature regulation.

MODEL	LED	OUTPUT / RUNTIME					BEAM DIAMETER	BEAM INTENSITY	
		TURBO	HIGH	MID	LOW	LOWER			
Multi-Task Series	MT2A	CREE XP-G2 R5	345LUMENS	138LUMENS	55LUMENS	17LUMENS	—	152m	5800cd
			2h15min	5h	12h	50h	—		
	MT22A	CREE XP-G2 S3	—	260LUMENS	45LUMENS	1LUMEN	—	98m	2400cd
			—	*2h15min	18h	180h	—		
	MT1C	CREE XP-G2 R5	345LUMENS	138LUMENS	66LUMENS	22LUMENS	—	152m	5800cd
			1h15min	3h15min	8h	23h	—		
	MT40GT	CREE XP-L HI V3	1000LUMENS	500LUMENS	250LUMENS	90LUMENS	—	618m	95400cd
2h15min			4h15min	9h30min	31h	—			
MT21C	CREE XP-L HD V6	1000LUMENS	400 LUMENS	190 LUMENS	50 LUMENS	1 LUMEN	184m	8500cd	
		*1h	3h45min	7h30min	25h	700h			
MT22C	CREE XP-L HD V6	1000LUMENS	—	—	—	0.5 LUMENS	185m	8600cd	
		1h	—	—	—	500h			
MT42	CREE XHP35 HD	1800LUMENS	800 LUMENS	280 LUMENS	68 LUMENS	1 LUMEN	470m	55400cd	
		*1h	3h30min	12h	45h	530h			
Explorer Series	EA41	CREE XM-L2 U2	1020LUMENS	580LUMENS	160LUMENS	50LUMENS	1LUMEN	335m	28276cd
			1h45min	2h45min	12h	30h	400h		
	EA81	CREE XHP50	2150LUMENS	1200LUMENS	460LUMENS	80LUMENS	1LUMEN	462m	53300cd
			1h45min	2h30min	7h	32h	810h		
	EC20	CREE XM-L2 U2	—	960LUMENS	210LUMENS	50LUMENS	1LUMEN	222m	12450cd
			—	1h15min	6h	28h	520h		
	EC23	CREE XHP35 HD E2	1800LUMENS	980LUMENS	300LUMENS	55LUMENS	1LUMEN	255m	16200cd
			*30min	*1h30min	4h45min	22h	330h		
	EC4S	CREE XHP50	2150LUMENS	1100LUMENS	400LUMENS	80LUMENS	2LUMENS	280m	19600cd
			45min	2h15min	6h15min	30h45min	325h		
	EC11	CREE XM-L2 U2	900LUMENS	300LUMENS	160LUMENS	70LUMENS	1LUMEN	190m	9000cd
			30min	45min	1h30min	2h30min	12h		
EC4GT	CREE XP-L HI V3	1000LUMENS	420LUMENS	200LUMENS	50LUMENS	1LUMEN	475m	56500cd	
		2h	4h45min	10h	25h	380h			
EA11	CREE XM-L2 U2	900LUMENS	300LUMENS	160LUMENS	70LUMENS	1LUMEN	190m	9000cd	
		30min	45min	1h30min	2h30min	12h			
EA42	CREE XHP35 HD	1800LUMENS	850LUMENS	300LUMENS	55LUMENS	1LUMEN	353m	31200cd	
		*30min	1h45min	4h45min	20h	280h			
EC21	CREE XP-G2 R5	460LUMENS	210LUMENS	100LUMENS	20LUMENS	1LUMEN	194m	9400cd	
		1h45min	4h45min	12h	50h	430h			
EC22	CREE XP-L HD V6	1000LUMENS	—	—	—	0.5 LUMENS	185m	8600cd	
		1h	—	—	—	500h			
T Series	Thumb	2 High Performance LEDs	—	85LUMENS	30LUMENS	2LUMENS	—	26m	170cd
			—	45min	2h15min	22h	—		
	Thumb LEO	2 High Performance LEDs	45LUMENS	—	—	—	—	24m	150cd
			2h	—	—	—	—		
TINI/ TINI Cu	CREE XP-G2 S3	380LUMENS	145LUMENS	38LUMENS	1LUMEN	—	64m	1020cd	
		*15min	1h	4h	60h	—			
TUBE	High Performance LED	—	45LUMENS	—	1LUMEN	—	24m	150cd	
		—	1h	—	48h	—			

WATERPROOF	BATTERY OPTIONS	DIMENSIONS			WEIGHT	MODEL
		LENGTH	HEAD DIAMETER	TUBE DIAMETER		
IPX8	2xAA	155mm (6.1")	22.56mm (0.89")	21.5mm (0.85")	67g (2.36oz)	MT2A
IPX8	2xAA	80.9mm (3.19")	40.7mm (1.6") (Width)	21mm (0.83") (Depth)	49g (1.73oz)	MT22A
IPX8	1xCR123	88mm (3.46")	22.56mm (0.89")	21.5mm (0.85")	42g (1.48oz)	MT1C
IPX8	2x18650 / 4xCR123	221.5mm (8.72")	50mm (1.97")	25.4mm (1")	245g (8.64oz)	MT40GT
IPX8	1x18650 / 2xCR123	131mm(5.16")	25.4mm(1")	25.4mm(1")	103.5g(3.65oz)	MT21C
IPX8	1x18650 / 2xCR123	136mm(5.35")	25.4mm(1")	25.4mm(1")	92g(3.24oz)	MT22C
IPX8	2x18650	228mm(8.98")	50mm(1.97")	25.4mm(1")	231.5g(8.17oz)	MT42
IPX8	4xAA	117mm (4.6")	40mm (1.57")	41.8mm (1.65")	151g (5.33oz)	EA41
IPX8	8xAA	193mm (7.6")	60mm (2.36")	41.8mm (1.65")	282g (9.95oz)	EA81
IPX8	1x18650 / 2xCR123	128mm (5")	25.4mm (1")	25.4mm (1")	76g (2.68oz)	EC20
IPX8	1x18650 / 1xIMR18650 / 2xCR123	128.7mm (5.07")	25.4mm (1")	25.4mm (1")	78g (2.75oz)	EC23
IPX8	2x18650 / 4xCR123	150mm (5.9")	40mm (1.57")	39mmx28mm (1.54"x1.1")	171g (6.03oz)	EC4S
IPX8	1xIMR18350 / 1xCR123	75mm (2.95")	25.4mm (1")	25.4mm (1")	45.3g (1.6oz)	EC11
IPX8	2x18650 / 4xCR123	155mm (6.1")	40mm (1.57")	40mmx29mm (1.57"x1.12")	171g (6.03oz)	EC4GT
IPX8	1xIMR14500 / 1xAA	92mm (3.62")	25.4mm (1")	20mm (0.79")	53g (1.87oz)	EA11
IPX8	4xAA Ni-MH	168mm (6.61")	40mm (1.57")	34.6mmx19.6mm (1.36"x0.77")	127.7g (4.5oz)	EA42
IPX8	1x18650 / 2xCR123	108mm (4.25")	25.4mm (1")	25.4mm (1")	59.5g (2.1oz)	EC21
IPX8	1x18650 / 2xCR123	128mm(5.04")	25.4mm (1")	25.4mm (1")	77.2g(2.72oz)	EC22
IP65	Built-in rechargeable Li-ion battery	74mm (2.91") (Length)	24mm (0.94") (Width)	15.8mm (0.62") (Depth)	25g (0.88oz)	Thumb
IP65	Built-in rechargeable Li-ion battery	74mm (2.91") (Length)	24mm (0.94") (Width)	15.8mm (0.62") (Depth)	25g (0.88oz)	Thumb LEO
IP54	Built-in rechargeable Li-ion battery	43.3mm (1.7") (Length)	25.4mm (1") (Width)	11.5mm (0.45") (Depth)	TINI:13.4g (0.47oz) TINI Cu:21.5g (0.76oz)	TINI/ TINI Cu
IP65	Built-in rechargeable Li-ion battery	56.5mm (2.22") (Length)	21mm (0.83") (Width)	8mm (0.31") (Depth)	9.6g (0.34oz)	TUBE

NOTE: Runtime has been measured with the first battery type stated in battery options.
* The runtime for Turbo/High mode is the testing result before starting temperature regulation.

MODEL	LED	OUTPUT / RUNTIME					BEAM DIAMETER	BEAM INTENSITY	
		TURBO	HIGH	MID	LOW	LOWER			
T Series	TUBE UV/RL/BL/GL	High Performance LED	TUBE UV	TUBE RL	TUBE GL	TUBE BL	—	—	—
			500mW	13LUMENS	25LUMENS	4LUMENS	—		
			1h	1h	45min	45min	—		
	TIP /TIP SS/ TIP Cu	CREE XP-G2 S3	360LUMENS	150LUMENS	35LUMENS	1LUMEN	—	74m	1400cd
			*30min	1h30min	6h30min	46h	—		
	TIP CRI	Nichia 219B , CRI ≥ 90	240LUMENS	95LUMENS	22LUMENS	1LUMEN	—	56m	810cd
			*30min	1h30min	6h30min	46h	—		
	T360	High Performance LED	—	45LUMENS	15LUMENS	2LUMENS	—	30m	230cd
—			45min	1h45min	21h	—			
T360M	High Performance LED	—	45LUMENS	15LUMENS	2LUMENS	—	30m	230cd	
		—	45min	1h45min	21h	—			
NU Series	NU05	4 High Performance LEDs	35LUMENS	—	—	—	—	—	—
			1h	—	—	—	—		
	NU10	5 High Performance LEDs	—	160LUMENS	35LUMENS	1LUMEN	—	35m	310cd
			—	7h	8h45min	150h	—		
	NU10 CRI	High Colour Rendering Capability , CRI ≥ 90	—	115LUMENS	22LUMENS	1LUMEN	—	30m	220cd
			—	7h	8h45min	150h	—		
	NU20	CREE XP-G2 S3	360LUMENS	220LUMENS	40LUMENS	1LUMEN	—	80m	1600cd
			*30min	6h	7h45min	100h	—		
	NU20 CRI	Nichia 219B , CRI ≥ 90	270LUMENS	170LUMENS	30LUMENS	1LUMEN	—	69m	1200cd
			*30min	6h	7h45min	100h	—		
NU25	CREE XP-G2 S3	360LUMENS	190LUMENS	38LUMENS	1LUMEN	—	81m	1650cd	
		*30min	5h	8h	160h	—			
NU30	CREE XP-G2 S3	400LUMENS	180LUMENS	36LUMENS	1LUMEN	—	121m	3700cd	
		*1h15min	22h	25h15min	330h	—			
Headlamp Series	HC30	CREE XM-L2 U2	1000LUMENS	400LUMENS	210LUMENS	70LUMENS	1LUMEN	162m	6600cd
			1h	3h30min	7h15min	15h15min	330h		
	HC33	CREE XHP35 HD	1800LUMENS	780LUMENS	240LUMENS	70LUMENS	1LUMEN	187m	8750cd
			*30min	*1h45min	5h45min	16h30min	330h		
	HC60	CREE XM-L2 U2	1000LUMENS	420LUMENS	210LUMENS	38LUMENS	1LUMEN	117m	3400cd
			1h	2h30min	7h15min	25h	680h		
	HC65	CREE XM-L2 U2	1000LUMENS	550LUMENS	280LUMENS	80LUMENS	1LUMEN	110m	3000cd
			*1h	2h45min	4h45min	16h	800h		
HC70	CREE XM-L2 U2	1000LUMENS	550LUMENS	240LUMENS	65LUMENS	1LUMEN	182m	8300cd	
		*2h15min	*4h	10h	30h	220h			
HA40	CREE XM-L2 U2	1000LUMENS	500LUMENS	210LUMENS	45LUMENS	1LUMEN	182m	8300cd	
		*1h	*2h15min	6h30min	38h	430h			
Lantern Series	LA10	CREE XP-G2 S3	—	135LUMENS	40LUMENS	10LUMENS	—	10m (Beam Diameter)	—
			—	1h30min	6h	23h	—		
	LA10 CRI	Nichia 219B, CRI≥90	—	85LUMENS	30LUMENS	9LUMENS	—	10m (Beam Diameter)	—
			—	1h30min	6h	23h	—		
LA30	8 High CRI LEDs	—	250LUMENS	55LUMENS	8LUMENS	—	35m (Beam Diameter)	80cd	
		—	4h	9h15min	56h	—			

WATERPROOF	BATTERY OPTIONS	DIMENSIONS			WEIGHT	MODEL
		LENGTH	HEAD DIAMETER	TUBE DIAMETER		
IP65	Built-in rechargeable Li-ion battery	56.5mm (2.22") (Length)	21mm (0.83") (Width)	8mm (0.31") (Depth)	9g (0.32oz)	TUBE UV/RL/BL/GL
IP54	Built-in rechargeable Li-ion battery	60.8mm (2.39") (Length)	24.5mm (0.96") (Width)	13.8mm (0.54") (Depth)	TIP :23.5g (0.83oz) TIP SS:32g (1.13oz) TIP Cu: :36.3g (1.28oz)	TIP /TIP SS/ TIP Cu
IP54	Built-in rechargeable Li-ion battery	60.8mm (2.39") (Length)	24.5mm (0.96") (Width)	13.8mm (0.54") (Depth)	23.5g (0.83oz)	TIP CRI 2017
IP65	Built-in rechargeable Li-ion battery	58.7mm (2.31") (Length)	24.2mm (0.95") (Width)	13.5mm (0.53") (Depth)	20.6g (0.73oz)	T360
IP65	Built-in rechargeable Li-ion battery	58.7mm (2.31") (Length)	24.2mm (0.95") (Width)	13.5mm (0.53") (Depth)	21.5g (0.76oz)	T360M
IP66	Built-in rechargeable Li-ion battery	30.3mm (1.19") (Length)	29.5mm (1.16") (Width)	16.3mm (0.64") (Depth)	10.4g (0.37oz)	NU05
IP66	Built-in rechargeable Li-ion battery	60.5mm (2.38") (Length)	35mm (1.38") (Width)	29mm (1.15") (Depth)	65g (2.29oz)	NU10
IP66	Built-in rechargeable Li-ion battery	60.5mm (2.38") (Length)	35mm (1.38") (Width)	29mm (1.15") (Depth)	65g (2.29oz)	NU10 CRI
IPX7	Built-in rechargeable Li-ion battery	55.5mm (2.18") (Length)	33mm (1.29") (Width)	21mm (0.82") (Depth)	47g (1.66oz)	NU20
IPX7	Built-in rechargeable Li-ion battery	55.5mm (2.18") (Length)	33mm (1.29") (Width)	21mm (0.82") (Depth)	47g (1.66oz)	NU20 CRI
IP66	Built-in rechargeable Li-ion battery	55.5mm (2.19") (Length)	34.6mm (1.36") (Width)	23.2mm (0.91") (Depth)	28g (0.99oz)	NU25
IP67	Built-in rechargeable Li-ion battery	63mm (2.48") (Length)	43.5mm (1.71") (Width)	31.5mm (1.24") (Depth)	84.8g (2.99oz)	NU30
IPX8	1x18650 / 2xCR123	98mm (3.86")	24.2mm (0.95")	23.8mm (0.94")	40.3g (1.42oz)	HC30
IP68	1x18650 / 1xIMR18650 / 2xCR123	105.3mm (4.15")	25.5mmx24.2mm (1"x0.95")	23.8mm (0.94")	51.2g (1.81oz)	HC33
IPX7	1x18650 / 2xCR123	79mmx27mmx18.5mm (3.11"x1.06"x0.73")			98.5g (3.47oz)	HC60
IPX8	1x18650 / 2xCR123	82.7mmx33.3mmx26.7mm (3.26"x1.31"x1.05")			62.7g (2.21oz)	HC65
IP67	2x18650	Head size : 64mmx36mmx56mm (2.52"x1.42"x2.2") Head diameter : 32mm (1.26") Battery Case : 110.2mmx48.5mmx28mm (4.34"x1.91"x1.1")			Headlamp: 97.9g (3.45oz) Battery Case: 176.7g (6.23oz)	HC70
IP66	4xAA	Head size : 64mmx36mmx56mm (2.52"x1.42"x2.2") Head diameter : 32mm (1.26") Battery Case : 70mmx26.3mmx67.3mm (2.76"x1.04"x2.65")			126.7g (4.47oz)	HA40
IPX6	1xAA	78.5mm (3.09")	22.6mm (0.89")	—	42.7g (1.51oz)	LA10
IPX6	1xAA	78.5mm (3.09")	22.6mm (0.89")	—	42.7g (1.51oz)	LA10 CRI
IP66	Built-in rechargeable Li-ion battery / 2xAA	75.2mmx49.5mmx53.8mm (2.96"x1.95"x2.12")			117g (4.61oz)	LA30

NOTE: Runtime has been measured with the first battery type stated in battery options.
* The runtime for Turbo/High mode is the testing result before starting temperature regulation.

MODEL	LED	OUTPUT / RUNTIME					BEAM DIAMETER	BEAM INTENSITY	
		TURBO	HIGH	MID	LOW	LOWER			
Lantern Series	LR10	9 High CRI LEDs	—	250LUMENS	65LUMENS	8LUMENS	—	24m (Beam Diameter)	38cd
	LR30	6 High Performance LEDs	—	205LUMENS	85LUMENS	12LUMENS	—	40m (Beam Diameter)	103cd
			—	*3h30min	8h30min	62h	—		
LR12	CREE XP-L HD V6	100LUMENS	230LUMENS	60LUMENS	1LUMEN	—	166m	6900cd	
Explosion-proof Series	EF1	CREE XM-L2 U3	—	830LUMENS	320LUMENS	4LUMENS	—	270m	18300cd
			—	1h45min	3h	150h	—		
	EH1	CREE XP-G2 S3	—	260LUMENS	65LUMENS	22LUMENS	—	—	—
—			10h	40h	120h	—			
EH1S	CREE XP-G2 S3	—	260LUMENS	65LUMENS	22LUMENS	—	—	—	
		—	5h	20h	60h	—			
Diving Light Series	DL10	CREE XP-L HI V3	—	1000LUMENS	—	385LUMENS	—	223m	12400cd
			—	*1h15min	—	4h	—		
Bike Light Series	BR35	2 CREE XM-L2 U2 LEDs	800LUMENS	465LUMENS	285LUMENS	150LUMENS	Short Range Beam	176m	7750cd
			*2h	5h45min	8h30min	17h			
			1000LUMENS	550LUMENS	330LUMENS	180LUMENS	Long Range Beam		
			*2h	5h45min	8h30min	17h			
			1800LUMENS	1015LUMENS	615LUMENS	300LUMENS	Dual Range Beam		
*1h	2h30min	4h	8h						
Concept Series	Concept1	CREE XHP35 HD E2	1800LUMENS	810LUMENS	300LUMENS	80LUMENS	1LUMEN	220m	12100cd
	*30min	*1h30min	4h	15h	300h				
Concept2	4 CREE XHP35 HD LEDs	6500 LUMENS	2500 LUMENS	1000 LUMENS	285 LUMENS	1 LUMEN	398m	39700 cd	
		*30min	*1h30min	6h30min	16h	2000h			
GP Series	GP3	CREE XP-G2	360LUMENS	230LUMENS	95LUMENS	30LUMENS	1LUMEN	105m	2770cd
	45min	1h45min	4h45min	11h	235h				
GP3 CRI	Nichia 219B , CRI ≥ 90	270LUMENS	175LUMENS	70LUMENS	20LUMENS	1LUMEN	70m	1200cd	
		*45min	1h45min	4h45min	11h	235h			
GEM Series	GEM8	CREE XP-L HI V3	500 LUMENS	—	—	—	1 LUMEN	39m	380cd
			*1h	—	—	—	500h		
	GEM8UV	UV light output of 3000mW, wavelength of 365nm	UV(Turbo)	—	—	—	UV(Ultralow)	—	—
			3000mW	—	—	—	5mW		
			*4h15min	—	—	—	500h		
	GEM10	CREE XP-L HI V3	800 LUMENS	—	—	—	1 LUMEN	186m	8650cd
*1h			—	—	—	500h			
GEM10UV	UV light output of 3000mW, wavelength of 365nm	UV(Turbo)	—	—	—	UV(Ultralow)	—	—	
		3000mW	—	—	—	5mW			
		*4h15min	—	—	—	500h			

NOTE: Runtime has been measured with the first battery type stated in battery options.
 * The runtime for Turbo/High mode is the testing result before starting temperature regulation.

WATERPROOF	BATTERY OPTIONS	DIMENSIONS			WEIGHT	MODEL
		LENGTH	HEAD DIAMETER	TUBE DIAMETER		
IP66	Built-in rechargeable Li-ion battery	65.5mmx50mmx25mm (2.58"x1.97"x0.98")			59.1g (2.18oz)	LR10
IPX6	1x18650 / 2xCR123	92mmx43.5mmx31.6mm (3.62"x1.72"x1.24")			62g (2.18oz)	LR30
IPX8	1x18650 / 2xCR123	106.2mm (4.18")	26.9mm (1.06")	26.9mm (1.06")	78.5g(2.77oz)	LR12
IP54	1x18650	152.2mm (6")	40mm (1.57")	32.1mm (1.26")	250g (8.82oz)	EF1
IP68	Built-in rechargeable Li-ion battery	83mmx70mmx52mm (3.27"x2.76"x2.05")			191g (6.73oz)	EH1
IP68	Built-in rechargeable Li-ion battery	83mmx70mmx52mm (3.27"x2.76"x2.05")			151g (5.32oz)	EH1S
IPX8	1x18650 / 2xCR123	133.1mm (5.24")	34mm (1.34")	25.4mm (1")	143.1g (5.05oz)	DL10
IPX7	Built-in rechargeable Li-ion battery	109.3mmx48.9mmx40.9mm (4.3"x1.93"x1.61")			234.5g (8.27oz)	BR35
IPX8	1xIMR18650 / 1x18650 / 2xCR123	111.5mm (4.39")	24.5mm (0.96")	23.8mm (0.94")	61.9g (2.18oz)	Concept1
IP68	Built-in rechargeable Li-ion battery	112.5mm (4.43")	40mmx40mm (1.57"x1.57")		348g (12.28oz)	Concept2
IPX8	NLGP3 / GoPro AHDBT-302	57.5mm (2.26") (Length)	25.4mm (1") (Width)	85.8mm (3.38") (Depth)	82g (2.89oz)	GP3
IPX8	NLGP3 / GoPro AHDBT-302	57.5mm (2.26") (Length)	25.4mm (1") (Width)	85.8mm (3.38") (Depth)	82g (2.89oz)	GP3 CRI
IPX8	1x18650 / 2xCR123	139mm (5.47")	9mm (0.35")	21.5mm (0.85")	57.7g (2.04oz)	GEM8
IPX8	1x18650 / 2xCR123	139mm (5.47")	9mm (0.35")	21.5mm (0.85")	57.7g (2.04oz)	GEM8UV
IPX8	1x18650 / 2xCR123	135mm (5.31")	16mm (0.63")	21.5mm (0.85")	66.5g (2.35oz)	GEM10
IPX8	1x18650 / 2xCR123	135mm (5.31")	16mm (0.63")	21.5mm (0.85")	66.5g (2.35oz)	GEM10UV

Lantern Series

Explosion-proof Series

Diving Light Series

Bike Light Series

Concept Series

GP Series

GEM Series

MODEL		DIMENSIONS	WEIGHT	BATTERY SLOTS
SC Series	SC2	155mmx80mmx44mm (6.1"x3.16"x1.73")	263g (9.28oz)	2
	SC4	165mmx110mmx45mm (6.5"x4.33"x1.77")	385g(13.59oz)	4
D Series	D2	143mmx74mmx36mm (5.63"x2.91"x1.42")	168g (5.92oz)	2
	D4	143mmx99mmx36mm (5.63"x3.9"x1.42")	239g (8.43oz)	4
UM Series	UM10	100mmx 38mmx35mm (3.94"x1.5"x1.38")	57g(2.01oz)	1
	UM20	100mmx 56mmx35mm (3.94"x2.2"x1.38")	77.2g(2.72oz)	2
i Series	NEW i2	132mmx70mmx35mm (5.2"x2.76"x1.38")	126g(4.44oz)	2
	NEW i4	140mmx94.8mmx37mm (5.51"x3.73"x1.45")	202g(7.12oz)	4
	i8	117mmx101mmx134.5mm (4.61"x3.98"x5.30")	488.2g(17.22oz)	8
F Series	F1	87.2mmx24mmx29.3mm (3.43"x0.94"x1.15")	30.4g (1.07oz)	1
	F2	94mmx44mmx25mm (3.7"x1.73"x0.98")	46.5g(1.64oz)	2
Q Series	Q2	125.4mmx59.6mmx36.2mm (4.94"x2.35"x1.43")	92g(3.25oz)	2
	Q4	125.4mmx95.6mmx36.2mm (4.94"x3.76"x1.43")	150.3g(5.3oz)	4
	Q6	132.5mmx137.5mmx36.2mm (5.22"x5.41"x1.43")	229g(8.08oz)	6
V Series	V2	67mmx65mmx125mm (2.36"x2.29"x4.41")	197.6g (6.94oz)	2
Camera Charger	UCN1	85mmx50mmx25mm (3.34"x1.96"x0.98")	55.7g(1.96oz)	2
	UNK1	85mmx50mmx25mm (3.34"x1.96"x0.98")	59g(2.09oz)	2
	USN1	85mmx50mmx26.5mm (3.35"x1.97"x1.04")	58.9g(2.08oz)	2
	ULM9	85mmx50mmx30mm (3.34"x1.96"x1.18")	50.5g(1.78oz)	1
	ULM240	85mmx50mmx26.5mm (3.34"x1.96"x1.04")	52g(1.83oz)	1
	ULSL	85mmx50mmx29.5mm (3.34"x1.96"x1.16")	55.8g(1.96oz)	1
	ULQ	85mmx50mmx26.5mm (3.34"x1.96"x1.04")	53g(1.9oz)	1
	USN2	80mmx50mmx25mm (3.15"x1.97"x0.98")	54.2g (1.91oz)	2
	UL109	85mmx50mmx25.5mm (3.35"x1.97"x1")	57.7g (2.04oz)	2
	FX1	85mmx50mmx25.5mm (3.35"x1.97"x1")	58g (2.05oz)	2
UGP Series	UGP3	67mmx44mmx24mm (2.64"x1.73"x0.94")	44.2g(1.56oz)	2
	UGP4	84mmx45mmx27mm (3.3"x1.77"x1.06")	55.3g(1.95oz)	2
	UGP5	97mmx50mmx26.5mm (3.82"x1.97"x1.04")	67.5g (2.38oz)	2
LC Series	LC10	245mmx24.5mmx18.5mm (9.65"x0.96"x0.73")	27.8g (0.98oz)	1



Thanks again for choosing NITECORE!

NITECORE Warranty Service

If you have any questions regarding the use of your NITECORE product, please feel free to contact your local distributor, reseller or retailer. Alternatively, contact SYSMAX directly using the details below:

Phone: +86 20 8386 2000
 Fax: +86 20 8388 2723
 E-mail: info@nitecore.com

All images, text and statements specified here in this catalogue are for reference purpose only. Should any discrepancy occurs between this catalogue and information specified on www.nitecore.com, information on our official website shall prevail. SYSMAX Innovations Co., Ltd. reserves the rights to interpret and amend the content of this document at any time without prior notice.